

Third Part Inspection Aluminium Rod 3003 Mill Finish Natural Color Nickel Alloy

Our Product Introduction

Basic Information

- Place of Origin: Jiangsu, China
- Brand Name: LIANZHONG
- Certification: ISO9001
- Model Number: 1000series, 2000series, 3000series, 5000series, 6000series, 7000series
- Minimum Order Quantity: 1 Ton
- Price: Negotiable
- Packaging Details: Exporting package/wooden box package etc
- Delivery Time: 3-15 days
- Payment Terms: L/C, T/T, Western Union
- Supply Ability: 20000 Ton/Tons per Month



Product Specification

- Product Name: Aluminum Flat Bar
- Diameter: 5 - 2500mm Or As Required
- Thickness: 0.8mm-20mm Or As Required
- Standard: ASTM, AISI, GB, JIS, DIN, EN
- Transport Package: Stand Sea-Worthy Packing
- Shape: Rectangular Round Or As Required
- Highlight: **3003 Aluminium Rod,
Natural Color Aluminium Rod,
Nickel Alloy Aluminium Rod**



for more products please visit us on aluminium-sheetcoil.com

Product Description

Third Part Inspection Aluminium Rod 3003 Mill Finish Natural Color Nickel Alloy

Product Description

Aluminum rod is widely used in decoration, packaging, construction, transportation, electronics, aviation, aerospace, weapons and other industries. Also the production of structural parts, can produce forged aluminum, alloy aluminum and ther aluminum alloy workpiece.

Product Name	Aluminium Rod
Type	Round bar,Angle bar,Channel bar,Square bar,Flat bar,l/H bar,Hexagonal bar and profiles
Surface	Black,bright,rough turned,grinding,centreless Ground etc
Standard	GB,AISI,ASTM,DIN,EN,SUS,UNS etc
Diameter	Customized
Tolerance	±1%
Technique	Hot Rolled,Cold Rolled,Cold Drawn,Forged
Tolerance	H8,H9 or as required
Payment Term	L/C T/T (30%DEPOSIT)
Packing	Standard Seaworthy Package

Mechanical Properties

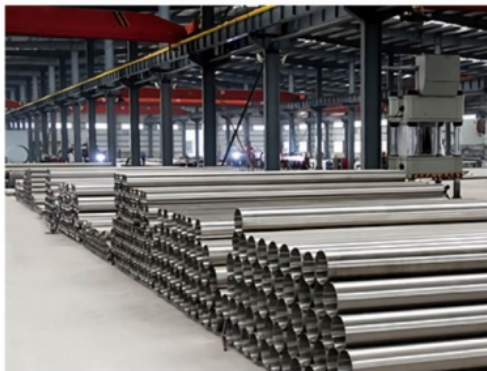
ALUMINUM ALLOY	Grade	Normal Temper	Temp er	Tensile Strength N/mm ²	Yield strength N/mm ²	Elongation %		Brinell Hardness HB
						Plate	Bar	
1XXX	1050	O,H112,H	O	78	34	40	-	20
	1060	O,H112,H	O	70	30	43	-	19
2XXX (Al-Cu)	2019	0,T3,T4,T6,T8	T851	450	350	10	-	-
	2024	0,T4	T4	470	325	20	17	120

3XXX (Al-Mn)	3003	O,H112H	O	110	40	30	37	28
	3004	O,H112,H	O	180	70	20	22	45
4XXX(Al-Si)	4032	O,T6,T62	T6	380	315	-	9	120
5XXX (Al-Mg)	5052	OH112,H	H34	260	215	10	12	68
	5083	O,H112,H	O	290	145	-	20	
6XXX (Al-Mg-Si)	6061	0,T4,T6,T8	T6	310	275	12	15	95
	6063	O,T1,T5,T6,T8	T5	185	145	12	-	60
7XXX (Al-Zn-Mg)	7003	T5	T5	315	255	15	-	85
	7075	O,T6	T6	570	505	11	9	150

Product Detail

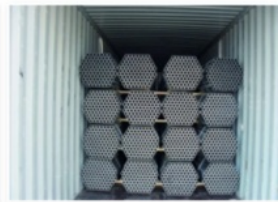
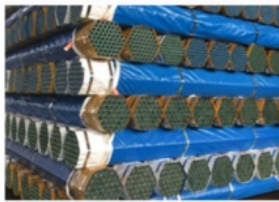


Packing and Shipment



PACKAGING

in bundle, plastic bags, thin film, wooden pallet, standard seaworthy export packing or as customer demands



Application



Certification






FAQ

When can I get your reply after the inquiry.
Within 15 minutes during working time, within 12 hours during non-working time.

How can I get an accurate quote?
Please provide the information of products standard, material, size and quantity.

How to visit your factory?
Most of the main cities have flights to Wuxi; you can take flight to Wuxi Shuofang International Airport.
If you come from Shanghai, it will take 2 hours by flight (every day 5 flights).
If you come from Hongkong, it will take 1 hour by flight (every day 1 flight around noon time).

 +8618151700330  sales02@jslzsteel.com  aluminium-sheetcoil.com

Guang Yi Columbus B Tower, Wuxi, Jiangsu, China