

GB T 3190 Aluminium Pipe 6000 7000 Series Sample For Marine Applications

Our Product Introduction

Basic Information

- Place of Origin: Jiangsu, China
- Brand Name: CHINALCO
- Certification: ISO9001
- Model Number: 1000series, 2000series, 3000series, 5000series, 6000series, 7000series
- Minimum Order Quantity: 1ton
- Price: Negotiable
- Packaging Details: Exporting package/wooden box package/Or per customers' requirement
- Delivery Time: 3-15 days
- Payment Terms: L/C, T/T, Western Union
- Supply Ability: 2000 Ton/Tons per Month



Product Specification

- Key Word: Aluminum Tube
- Diameter: 2 - 200mm Or As Required
- Tolerance: $\pm 1\%$
- Wall Thickness: 0.2mm - 150mm Or As Required
- Shape: Round, square, rectangle
- Hardness: Hard
- Manufacturing Technology: Drawn, extruded, forged, etc
- Application: Refrigerator, Air Condition, Automobile, Water Heater
- Highlight: **6000 Series Aluminium Pipe, 7000 Series Aluminium Pipe, Marine Applications Aluminium Pipe**



for more products please visit us on aluminium-sheetcoil.com

Product Description

GB T 3190 Aluminium Pipe 6000 7000 Series Sample For Marine Applications

Product Description

Aluminum tube is a kind of non-ferrous metal tube, which refers to a metal tubular material that is hollow along its longitudinal length by extruding pure aluminum or aluminum alloy. Aluminum alloy pipe is a kind of metal material with light weight, low conductivity, high corrosion resistance, good strength and other excellent properties, widely used in metallurgy, cold working, pipe fittings manufacturing and other lines. The main use of pipe fittings is not in connection, but also an important engineering surface treatment material. Aluminum tubes are widely used in all walks of life, such as: automobiles, ships, aerospace, aviation, electrical appliances, agriculture, electrical, home and so on.

Item	Aluminum Tube
Material	6000 series Aluminium
Temper	T4, T5, T6
Size / Thickness	General profiles thickness from 0.8 to 5.0mm, length from 3m-6m or customized available; Anodize protection film thickness from 8~25 um, powder coating from 40 ~ 120 um.
Shape	Square, round, rectangular, customized
Application	In furniture, windows&doors, decorations ,industry, construction and so on
Surface Treatment	Powder coating, electrophoresis, wood grain , anodized and so on
Colors	Ref powder coating color sheet and customized color available
Deep Process	CNC, drilling, milling, cutting, welding, bending, assembling
Packing Details	(1)Inside : packed with plastic protective film to protect each piece (2) Outside: Wrap to be bundles by waterproof craft paper
Delivery Time	(1)Die Developing and Sample testing: 12-18 days . (2) Mass Production completed: 20-30days after sample is confirmed by Buyer.
FOB Port	TIANJIN/QINGDAO
payment Terms	T/T 30% for deposit, balance before shipping.
settlement Term	Charge by final actual weight or by drawing theoretical weight.
Production capacity	5000 tons monthly, 60000 tons annually.
Certificate and Standard	CQM, SGS, CE, BV, SONCAP / GB, ISO, JIS, AS, NZS, QUALICOAT, QUOLANOD available
Guarantee	Surface color can be stable for many indoor using.

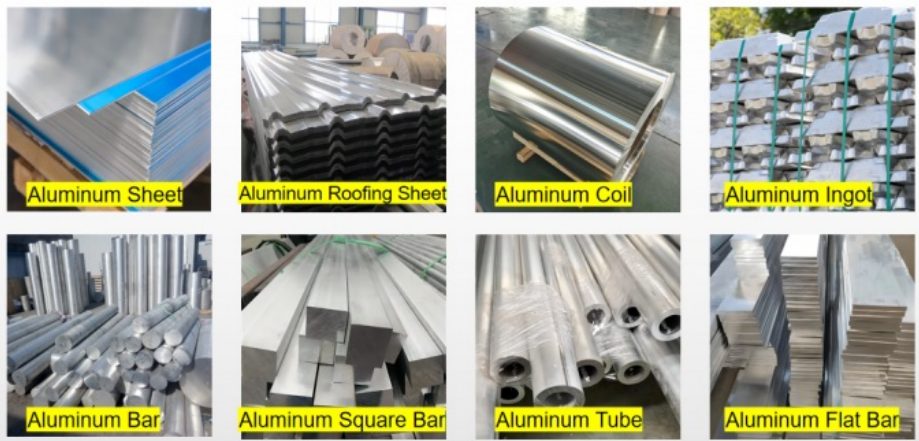
Product Detail



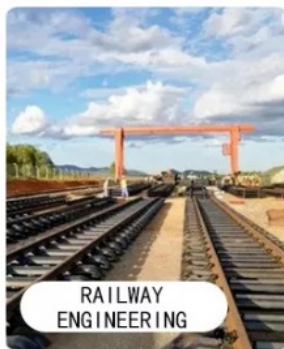
Chemical Composition

Grade	IS ON OR 209	Si	Fe	Cu	Mn	Mg	Cr	Ni	Zn	Ti	Al
1050	Al99.5	0.25	0.4	0.05	0.05	0.05	-	-	0.05	-	99.5
1060	Al99.6	0.25	0.35	0.05	0.03	0.03	-	-	0.04	-	99.7
1070	Al99.7	0.2	0.25	0.04	0.03	0.03	-	-	0.04	-	99.7
1100	Al99.0Cu	Si+Fe:0.95	0.05-0.2	0.05	-	-	-	0.1	-	-	99
2014	Cu4SiMg	0.50-1.2	0.7	3.9-0.5	0.40-1.2	0.20-0.8	0.1	-	0.25	0.15	99
2017	Cu4MgSi	0.20-0.8	0.7	3.5-4.5	0.40-1.0	0.40-1.0	-	-	0.3	-	99
2024	Cu4Mg1	0.5	0.5	3.8-4.9	0.30-0.9	1.2-1.8	0.1	-	0.25	0.15	99
3003	Al Mn1Cu	0.6	0.7	0.05-0.2	1.0-1.5	-	-	-	0.1	-	99
5005	AlMg1(B)	0.3	0.7	0.2	0.2	0.50-1.1	0.1	-	0.25	-	99
5042	Al Mg3.5Mn	0.2	0.35	0.15	0.20-0.50	3.0-4.0	0.1	-	0.25	0.1	99
5052	Al Mg2.5	0.25	0.4	0.1	0.1	2.2-2.8	0.15-0.35	-	0.1	-	99
5083	Al Mg4.5Mn0.7	0.4	0.4	0.1	0.40-1.0	4.0-4.9	0.05-0.25	-	-0.1	-	99
5754	Al Mg3	0.4	0.4	0.1	0.5	2.6-3.6	0.3	-	0.2	-	99
6061	Al Mg1SiCu	0.40-0.8	0.7	0.15-0.40	0.15	0.8-1.2	0.04-0.36	-	0.25	-	99
6063	Al Mg0.5Si	0.20-0.6	0.35	0.1	0.1	0.45-0.9	0.1	-	0.1	-	99
6082	Al Si1MgMn	0.7-1.3	0.5	0.1	0.40-1.0	0.6-1.2	0.25	-	0.2	-	99
7050	Al Zn6CuMgZr	0.12	0.15	2.0-2.6	0.1	1.9-2.6	0.04	-	5.7-6.7	0.06	99
7075	Al Zn5.5MgCu	0.4	0.5	1.2-2.0	0.3	2.1-2.0	0.18-0.28	-	5.1-6.1	0.2	99

Recommend Products



Application



Packing & Shipping



The Sample Delivery



Certificate



FAQ

How does your price quote ?

- 1 Lowest material cost in best quality
- 2 All the products are designed and product by ourselves to save product's cost
- 3 Quote the price in hours with the best price to help the partner to open the market.

Do you support OEM or ODM?

Yes right ! we could accept client 's design and we produce according to client 's drawing and we provide free service of installation face to face

What about the payment terms?

Our normal payment terms is 30% T/T as the prepayment and 70% balance need to be paid off before shipment, we also could accept L/C for good client who have been familiar with our factory for a few years



JIANGSU LIANZHONG METAL PRODUCTS (GROUP) CO., LTD

+8618151700330

sales02@islsteel.com

aluminium-sheetcoil.com

Guang Yi Columbus B Tower, Wuxi, Jiangsu, China