

3003 H24 Aluminum Checkered Plate Patterned Al Alloy 3mm Customized Size For Construction

Our Product Introduction

For more products please visit us on aluminium-sheetcoil.com

Basic Information

- Place of Origin: Jiangsu China
- Brand Name: Chinalco
- Certification: ASTM GB EN
- Model Number: 1050 1060 2024 5052 6061 6063 6082 7075 8011
- Minimum Order Quantity: 1 TON
- Price: Negotiable
- Packaging Details: Standard Seaworthy Packing
- Delivery Time: 7-10 days, or depends on the specific quantity
- Payment Terms: T/T,L/C
- Supply Ability: 20000tons/year



Product Specification

- Product Name: Aluminum Checkered Plate
- Material: Aluminum
- Grade: 1100, 3003, 3105, 5052, 5754, 5083, 6061, 6082, Etc.
- Temper: H14, H16, H18, H22, H24, H26, O, Etc.
- Edge: Mill Edge, Cut Edge
- Thickness: 0.2mm-6mm Or As Required
- Width: 100mm-2600mm Or As Required
- Package: Standard Export Package, Suit For All Kinds Of Transport, Or As Required.
- Highlight: **3003 h24 aluminum checkered plate, 3mm aluminum checkered plate, customized aluminium checker plate sheet**



Product Description

Product Description:

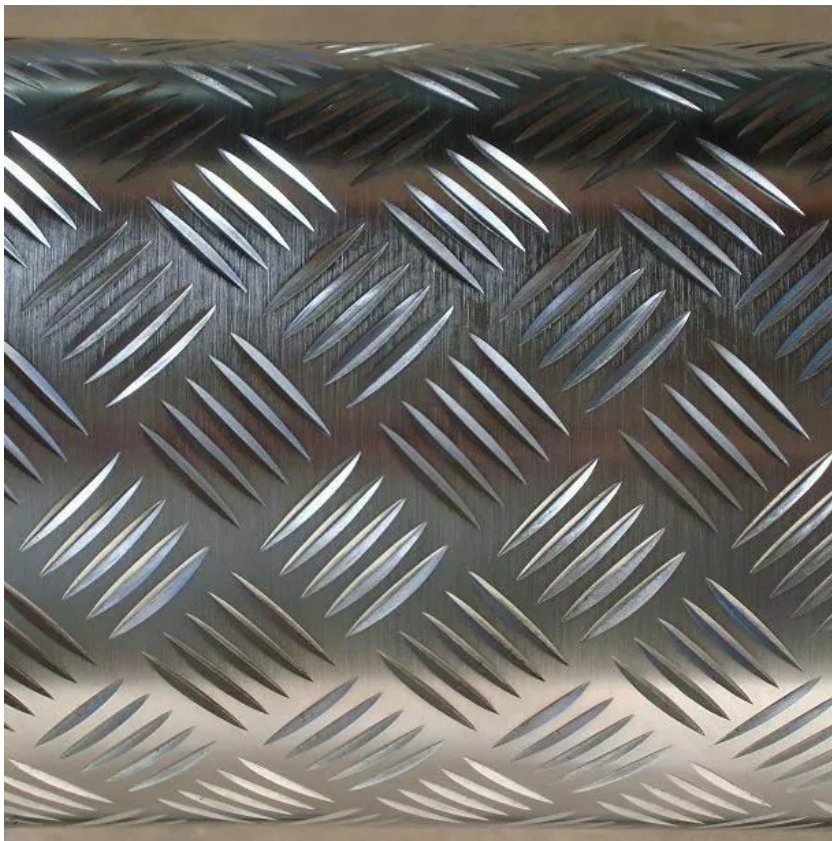
Aluminum checkered plate is a type of flat metal sheet with a pattern of raised diamonds, bars, or other shapes on one side. It is made of aluminum alloy, which is known for its excellent corrosion resistance, strength, and weldability. The plate is widely used in various industries such as transportation, construction, and decoration due to its durable and anti-slip properties. Pattern: Diamond, orange peel, 5 bars, 3

It is available in different patterns and sizes to meet the specific requirements of customers. The most common patterns are diamond, 5 bars, and 1 bar, which provide excellent anti-slip properties and add a decorative touch to the plate. The plate can be cut to any length needed, making it suitable for various applications.

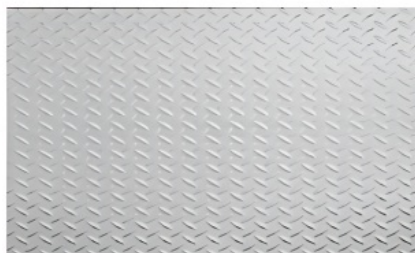
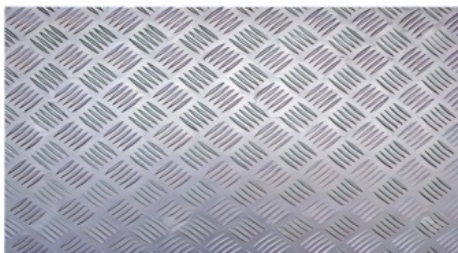
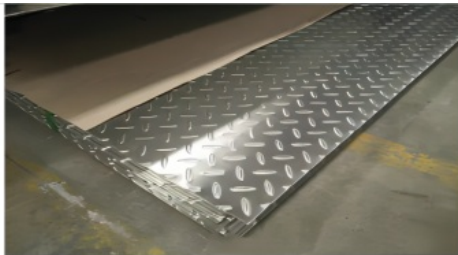
Features:

Item	Aluminium checker sheet
Standard	GB/T3190-2008,GB/T3880-2006,ASTM B209,JIS H4000-2006,etc
Material	1050 1060 1070 1080 1100 3003 3004 5052 5754 5086 6061 6063 7003 7075 8010etc
Thickness	0.1mm-200mm or as required
Width	2mm-2200mm or as required
Length	1-12m or as required
Temper	0-H112,T3-T8, T351-851
Surface	Mill, bright, polished, hair line, brush,sand blast, checkered,embossed, etching,etc
Aplication	1)Further making utensil 2)Solar reflective film 3)The appearance of the building 4)Interior decorating; ceilings, walls,etc 5)Furniture cabinets 6)Elevator decoraction 7)Signs, nameplate,bags making 8)Decorated inside and outside the car 9)Household appliances:refrigerators, microwave ovens, audio equipment,etc

Detailed Photo:



Type:



Chemical Composition:

Alloy	Si	Fe	Cu	Mn	Mg	Cr	Ni	Zn		Ti	Other		Al
											Singl e	Tot al	
1060	0.25	0.35	0.05	0.03	0.03	—	—	0.05	V:0.05	0.03	0.03	—	99.6
1050	0.25	0.4	0.05	0.05	0.05	—	—	0.05	V:0.05	0.03	0.03	—	99.5
1100	Si+Fe:0.95		0.05~0.40	0.05	—	—	—	0.1	—	—	0.05	0.15	99
1200	Si+Fe:1.00		0.05	0.05		—	—	0.1	—	0.05	0.05	0.15	99
3003	0.6	0.7	0.05~0.20	1.0~1.5	—	—	—	0.1		—	0.05	0.15	R
3004	0.3	0.7	0.25	1.0~1.5	0.8~1.3	—	—	0.25		—	0.05	0.15	R
3005	0.6	0.7	0.3	1.0~1.5	0.20~0.6	0.1	—	0.25		0.1	0.05	0.15	R
3105	0.6	0.7	0.3	0.30~0.8	0.20~0.8	0.2	—	0.4		0.1	0.05	0.15	R
5005	0.3	0.7	0.2	0.2	0.50~1.1	0.1	—	0.25	—	—	0.05	0.15	R
5052	0.25	0.4	0.1	0.1	2.2~2.8	0.15~0.35	—	0.1	—	—	0.05	0.15	R
5083	0.4	0.4	0.1	0.40~1.0	4.0~4.9	0.05~0.25	—	0.25	—	0.15	0.05	0.15	R
5086	0.4	0.5	0.1	0.20~0.7	3.5~4.5	0.05~0.25	—	0.25	—	0.15	0.05	0.15	R

Applications:

These are just a few of the many applications where our Aluminum Checkered Plate can be used. With its versatility and durability, it can be used in various industries such as transportation, construction, marine, automotive, and more.



Packing and Shipping:

Our Aluminum Checkered Plate is carefully packaged to ensure a safe and secure delivery to our customers. The packaging process is as follows:

Step 1: The Aluminum Checkered Plate is wrapped in protective plastic film to prevent any scratches or damage during transportation.

Step 2: The wrapped plate is then placed in a sturdy wooden crate to provide additional protection.

Step 3: The crate is then sealed and labeled with the product information and shipping details.

Step 4: The crate is loaded onto a flatbed truck for transportation to the designated shipping port.





The Sample Delivery



FAQ:

Q:Can you send samples?

A:Of course, we can send samples to all parts of the world, our samples are free, but customers need to bear the courier costs.

Q:What product information do I need to provide?

A:You need to provide the grade, width, thickness, number of tons you need to purchase.

Q:What are the shipping ports?

A:Under normal circumstances, we ship from Shanghai, Tianjin, Qingdao, Ningbo ports, you can choose other ports according to your needs.



JIANGSU LIANZHONG METAL PRODUCTS (GROUP) CO., LTD



+8618151700330



sales02@jslzsteel.com



aluminium-sheetcoil.com

Guang Yi Columbus B Tower, Wuxi, Jiangsu, China