

## 5083 H116 Tempered Aluminium Coil 5mm 24 Gauge Thick Alloy Sheet Roll For Industry

Our Product Introduction

For more products please visit us on [aluminium-sheetcoil.com](http://aluminium-sheetcoil.com)

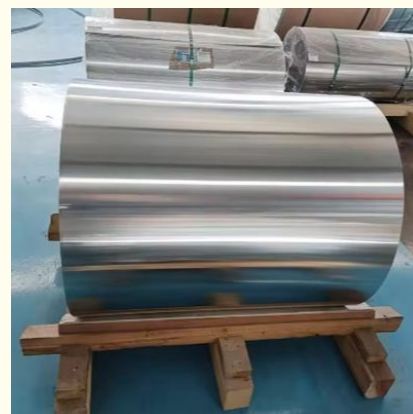
### Basic Information

- Place of Origin: Jiangsu China
- Brand Name: Chinalco
- Certification: ASTM GB EN
- Model Number: 1050 1060 2024 5052 6061 6063 6082 7075 8011
- Minimum Order Quantity: 1 TON
- Price: Negotiable
- Packaging Details: Standard Seaworthy Packing
- Delivery Time: 7-10 days, or depends on the specific quantity
- Payment Terms: T/T,L/C
- Supply Ability: 20000tons/year



### Product Specification

- Product Name: Aluminum Coil
- Surface Treatment: Coated, Embossed, Anodized, Etc.
- Edges: Mill Edge, Slit Edge
- Test: We Can Provide Mill Inspection,also Can Accept The Third Inspection
- Packing: Standard Export Packing
- Application: Industry, Construction, Decoration, Etc.
- Highlight: **h116 5083 aluminum coil,**  
**5083 aluminum coil 5mm,**  
**24 gauge 5083 aluminium coil**



## Product Description

### Product Description:

The Aluminium Coil is a type of flat rolled metal product that is widely used in various industries and applications. It is made from high quality aluminium alloy and is known for its excellent tensile strength, surface treatment options, and versatile width and length specifications. With its strong and durable properties, the Aluminium Coil is a popular choice for industry, construction, and decoration purposes.

### Features:

item	Aluminium Coil
Place of Origin	Jiangsu,China
Application	Mainly used in construction, home appliances, auto
Type	Steel Coil
Thickness	0.12-5.0mm or as required
Standard	JIS,AiSi,ASTM,GB,DIN,EN,bs
Certificate	CE, ISO
Grade	1000,2000,3000,5000,6000,8000 series
Technique	Cold Rolled Based
Tolerance	±1%
Processing Service	Welding, Punching, Cutting, Bending, Decoiling
Packing	Standard seaworthy packing or as required
Delivery Time	8-14 days,depends on the specific quantity
Shape	Coil
OEM	Yes

### Detailed Photo:





## Chemical Composition:



TABLE 1 Chemical Composition Limits<sup>A,B,C</sup>

Alloy	Silicon	Iron	Copper	Manganese	Magnesium	Chromium	Zinc	Titanium	Other Elements <sup>D</sup>		Aluminum
									Each	Total <sup>E</sup>	
1060	0.25	0.35	0.05	0.03	0.03	---	0.05	0.03	0.03 <sup>F</sup>	---	99.60 min <sup>G</sup>
1100	0.95 Si + Fe	0.05-0.20	0.05	---	---	---	0.10	---	0.05	0.15	99.00 min <sup>G</sup>
1230 <sup>H</sup>	0.70 Si + Fe	0.10	0.05	0.05	---	---	0.10	0.03	0.03 <sup>F</sup>	---	99.30 min <sup>G</sup>
2014	0.50-1.2	0.7	3.9-5.0	0.40-1.2	0.20-0.8	0.10	0.25	0.15	0.05	0.15	remainder
Alclad 2014	---	---	---	---	---	---	---	---	---	---	---
2024	---	---	---	---	---	---	---	---	---	---	---
Alclad 2024	---	---	---	---	---	---	---	---	---	---	---
2124	0.20	0.30	3.8-4.9	0.30-0.9	1.2-1.8	0.10	0.25	0.15	0.05	0.15	remainder
2219	0.20	0.30	5.8-6.8	0.20-0.40	0.02	---	---	0.02-0.10	0.05 <sup>I</sup>	0.15 <sup>I</sup>	remainder
Alclad 2219	---	---	---	---	---	---	---	---	---	---	---
3003	0.6	0.7	0.05-0.20	1.0-1.5	---	---	0.10	---	0.05	0.15	remainder
Alclad 3003	---	---	---	---	---	---	---	---	---	---	---
3004	0.30	0.7	0.25	1.0-1.5	0.8-1.3	---	0.25	---	0.05	0.15	remainder
Alclad 3004	---	---	---	---	---	---	---	---	---	---	---
3005	0.6	0.7	0.30	1.0-1.5	0.20-0.6	0.10	0.25	0.10	0.05	0.15	remainder
3105	0.6	0.7	0.30	0.30-0.8	0.20-0.8	0.20	0.40	0.10	0.05	0.15	remainder
5005	0.30	0.7	0.20	0.20	0.50-1.1	0.10	0.25	---	0.05	0.15	remainder
5010	0.40	0.7	0.25	0.10-0.30	0.20-0.6	0.15	0.30	0.10	0.05	0.15	remainder
5050	0.40	0.7	0.20	0.10	1.1-1.8	0.10	0.25	---	0.05	0.15	remainder
5052	0.25	0.40	0.10	0.10	2.2-2.8	0.15-0.35	0.10	---	0.05	0.15	remainder
5059	0.45	0.50	0.25	0.6-1.2	5.0-6.0	0.25	0.40-0.9	0.20	0.05 <sup>J</sup>	0.15	remainder
5083	0.40	0.40	0.10	0.40-1.0	4.0-4.9	0.05-0.25	0.25	0.15	0.05	0.15	remainder
5086	0.40	0.50	0.10	0.20-0.7	3.5-4.5	0.05-0.25	0.25	0.15	0.05	0.15	remainder
5154	0.25	0.40	0.10	0.10	3.1-3.9	0.15-0.35	0.20	0.20	0.05	0.15	remainder
5252	0.08	0.10	0.10	0.10	2.2-2.8	---	0.05	---	0.03 <sup>F</sup>	0.10 <sup>F</sup>	remainder
5254	0.45 Si + Fe	0.05	0.01	3.1-3.9	0.15-0.35	0.20	0.05	0.05	0.05	0.15	remainder
5454	0.25	0.40	0.10	0.50-1.0	2.4-3.0	0.05-0.20	0.25	0.20	0.05	0.15	remainder
5456	0.25	0.40	0.10	0.50-1.0	4.7-5.5	0.05-0.20	0.25	0.20	0.05	0.15	remainder
5457	0.08	0.10	0.20	0.15-0.45	0.8-1.2	---	0.05	---	0.03 <sup>F</sup>	0.10 <sup>F</sup>	remainder
5552	0.40 Si + Fe	0.04	0.01	2.2-2.8	0.15-0.35	0.10	0.10	---	0.05	0.15	remainder
5657	0.08	0.10	0.10	0.03	0.6-1.0	---	0.05	---	0.02 <sup>K</sup>	0.05 <sup>K</sup>	remainder
5754	0.40	0.40	0.10	0.50 <sup>L</sup>	2.6-3.6	0.30 <sup>L</sup>	0.20	0.15	0.05	0.15	remainder
6003 <sup>H</sup>	0.35-1.0	0.6	0.10	0.8	0.8-1.5	0.35	0.20	0.10	0.05	0.15	remainder
6013	0.6-1.0	0.50	0.6-1.1	0.20-0.8	0.8-1.2	0.10	0.25	0.10	0.05	0.15	remainder
6061	0.40-0.8	0.7	0.15-0.40	0.15	0.8-1.2	0.04-0.35	0.25	0.15	0.05	0.15	remainder
Alclad 6061	---	---	---	---	---	---	---	---	---	---	---
7009 <sup>H</sup>	0.10	0.10	0.05	0.05	0.7-1.4	0.12-0.25	4.5-5.5	0.05	0.05	0.10	remainder
7072 <sup>H</sup>	0.7 Si + Fe	0.10	0.10	0.10	---	---	---	---	0.05	0.15	remainder
7075	0.40	0.50	1.2-2.0	0.30	2.1-2.9	0.18-0.28	5.1-6.1	0.20	0.05	0.15	remainder
Alclad 7075	---	---	---	---	---	---	---	---	---	---	---
7008 Alclad 7075	---	---	---	---	---	---	---	---	---	---	---
7178	0.40	0.50	1.6-2.4	0.30	2.4-3.1	0.18-0.28	6.3-7.3	0.20	0.05	0.15	remainder
Alclad 7178	---	---	---	---	---	---	---	---	---	---	---

## Applications:



1)1000 series industrial aluminum used in construction, packaging, air conditioning, refrigerators, solar energy, cosmetics and other industries

2)1000 series industrial pure aluminum used in power plants, chemical petrochemical plants, etc.

3)3000 series aluminum-manganese alloy is often used in air conditioners, refrigerators, cars in humid environments, etc.

4)5000 Series aluminum-magnesium alloys are commonly used in aerospace applications such as aircraft fuel tanks. Widely used in traditional industries

## Packing and Shipping:

The Aluminium Coil is wrapped in protective layers to prevent any damage during transportation.

It is then placed in a sturdy wooden crate for added protection.

The crate is sealed and labeled with the necessary shipping information.



## FAQ:

1.How can I contact with your company?

You can contact us via email, wechat, WhatsApp or by phone.

2.How do you ensure the quality?

Always have pre-production samples before mass production; Always carry out final inspection before shipment;

3.Are You Manufacture or Trade Company?

Our company is a combination of factory and trade, we have our own factory, can continue to provide you with goods.

4.What is your terms of payment ?

Payment<=1000USD, 100% in advance. Payment>=1000USD, 30% T/T in advance ,balance before shipment or based on BL copy or LC at sight.



**JIANGSU LIANZHONG METAL PRODUCTS (GROUP) CO., LTD**



+8618151700330



sales02@jslzsteel.com



aluminium-sheetcoil.com

Guang Yi Columbus B Tower, Wuxi, Jiangsu, China