

6082 T6 Full Hardness Aluminum Plate Sheet 2mm 1250mm Width Flat Shape Mill Finished

Our Product Introduction

For more products please visit us on aluminium-sheetcoil.com

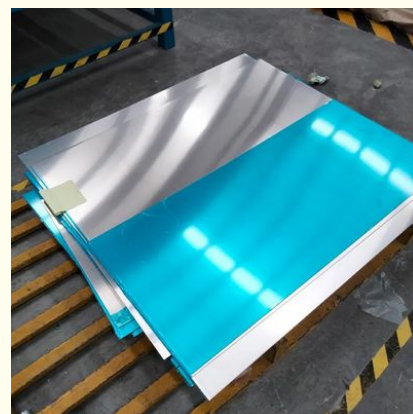
Basic Information

- Place of Origin: Jiangsu China
- Brand Name: Chinalco
- Certification: ASTM GB EN
- Model Number: 1050 1060 2024 5052 6061 6063 6082 7075 8011
- Minimum Order Quantity: 1 TON
- Price: Negotiable
- Packaging Details: Standard Seaworthy Packing
- Delivery Time: 7-10 days, or depends on the specific quantity
- Payment Terms: T/T, 100% L/C At Sight
- Supply Ability: 20000 tons/year



Product Specification

- Material: 1050 1060 2024 5052 6061 6063 6082 7075 8011
- Length: 1000mm-11000mm Or As Required
- Temper: O-H112 Or As Required
- Thickness: 0.6-12mm Or As Required
- Surface Finish: Polished, Anodizing, Brushed Or Customized
- Trade Terms: FOB CIF CFR EXW
- Hardness: 1/2 3/4 Full Hardness
- Alloy Or Not: Is Alloy
- Highlight: 6082 t6 aluminum plate sheet, aluminum plate sheet 2mm, full hardness 2mm aluminum plate



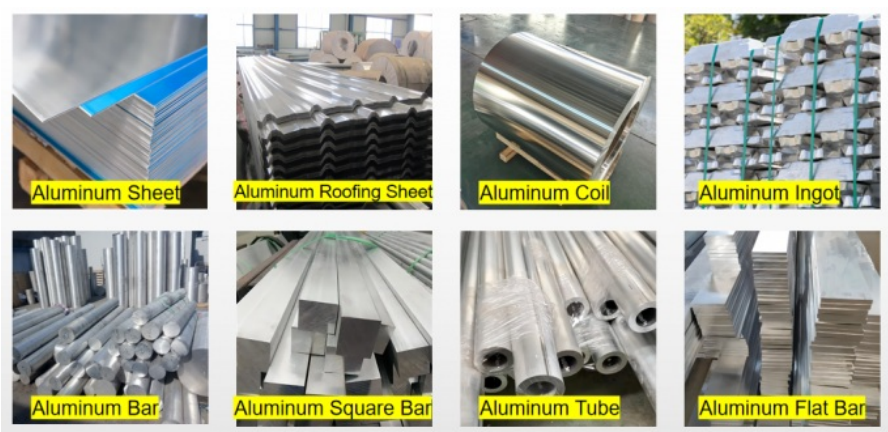
Features:

Detailed Photo:

[illegible]

y	Si	Fe	Cu	Mn	Mg	Cr	Zn	Ti	Singl e	Tot al	Al
1050	0.25	0.4	0.05	0.05	0.05	—	0.05	0.03	0.03	—	≥99.5
1060	0.25	0.35	0.05	0.03	0.03	—	0.05	0.03	0.03	—	≥99.6
1100	Si+Fe:0.95		0.05~0.40	0.05	—	—	0.1	—	0.05	0.15	≥99
1200	Si+Fe:1.00		0.05	0.05		—	0.1	0.05	0.05	0.15	≥99
3003	0.6	0.7	0.05~0.20	1.0~1.5	—	—	0.1	—	0.05	0.15	Remainder
3105	0.6	0.7	0.3	0.30~0.8	0.20~0.8	0.2	0.4	0.1	0.05	0.15	Remainder
5005	0.3	0.7	0.2	0.2	0.50~1.1	0.1	0.25	—	0.05	0.15	Remainder
5052	0.25	0.4	0.1	0.1	2.2~2.8	0.15~0.35	0.1	—	0.05	0.15	Remainder
5083	0.4	0.4	0.1	0.40~1.0	4.0~4.9	0.05~0.25	0.25	0.15	0.05	0.15	Remainder
5086	0.4	0.5	0.1	0.20~0.7	3.5~4.5	0.05~0.25	0.25	0.15	0.05	0.15	Remainder
6061	0.4~0.8	0.7	0.15~0.40	0.15	0.80~1.20	0.04~0.35	0.25	0.15	0.05	0.15	Remainder
6063	0.2~0.6	0.35	0.1	0.1	0.45~0.90	0.1	0.1	0.1	0.05	0.15	Remainder
6082	0.7~1.3	0.5	0.1	0.4~1.0	0.6~1.2	0.25	0.2	0.1	0.05	0.15	Remainder
8011	0.5~0.9	0.6~1.0	0.1	0.2	0.05	0.05	0.1	0.08	0.05	0.15	Remainder

More Products:



Applications:

Aluminium Plate Sheet is a high-quality product made of Chinalco brand, with model numbers 1050 1060 2024 5052 6061 6063 6082 7075 8011, and it's made in Jiangsu, China. It is certified by ASTM GB EN and is widely used in many industries, such as construction, manufacturing, transportation, electrical, etc.



For aerospace parts



Sign boards



Welding



Car manufacturer



Shipbuilding



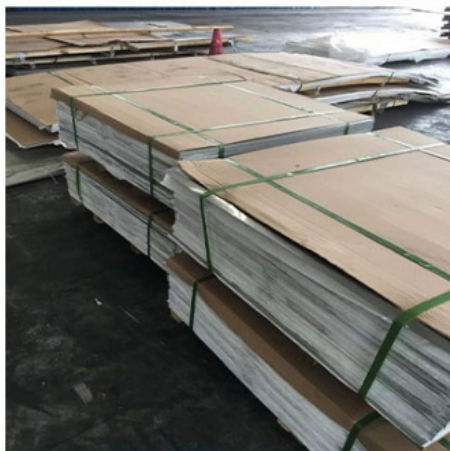
carriage

Support and Services:

Aluminium Plate Sheet provides technical support and services to ensure customer satisfaction. Our team of experts is available to provide assistance with product selection, installation, troubleshooting and maintenance. We offer a wide range of technical resources including installation instructions, FAQs, product specifications and manuals. We also offer professional services such as on-site training and repair services. If you have any questions or need assistance, please contact us and we will be happy to help.

Packing and Shipping:

To ensure the safety and integrity of your order, Aluminium Plate Sheet products will be securely packaged and shipped via insured freight service. Upon receipt, please inspect package/goods immediately. If there is any visible damage, please refuse delivery, note the damage on the delivery receipt, and contact us immediately. If delivery is accepted without notifying any damage, we can no longer assist with any claims for damage.





FAQ:

Q: Are you trading company or manufacturer ?

A: We have factory.

Q: Do you provide samples ? is it free or extra ?

A: Yes, we could offer the sample for free charge but do not pay the cost of freight.

Q: How long is your delivery time?

A: Generally it is 5-10 days if the goods are in stock. or it is 15-20 days if the goods are not in stock, it is according to quantity.

Q: What is your terms of payment ?

A: Payment<=1000USD, 100% in advance. Payment>=1000USD, 30% T/T in advance ,balance before shipment.



JIANGSU LIANZHONG METAL PRODUCTS (GROUP) CO., LTD



+8618151700330



sales02@jslzsteel.com



aluminium-sheetcoil.com

Guang Yi Columbus B Tower, Wuxi, Jiangsu, China