

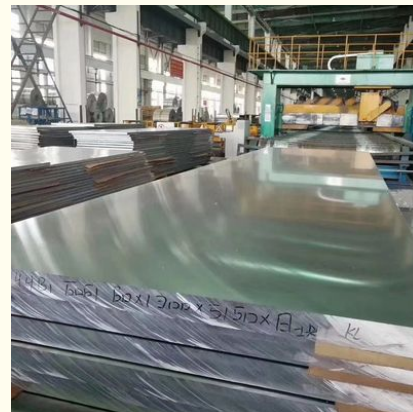
ASTM 5A06 H112 Alloy Aluminum Plate Sheet O - H112 Temper 3/4 Hardness 4x8 1.5mm

Our Product Introduction

For more products please visit us on aluminium-sheetcoil.com

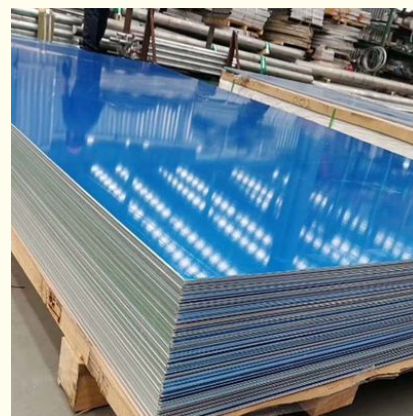
Basic Information

- Place of Origin: Jiangsu China
- Brand Name: Chinalco
- Certification: ASTM GB EN
- Model Number: 1050 1060 2024 5052 6061 6063 6082 7075 8011
- Minimum Order Quantity: 1 TON
- Price: Negotiable
- Packaging Details: Standard Seaworthy Packing
- Delivery Time: 7-10 days, or depends on the specific quantity
- Payment Terms: T/T,L/C
- Supply Ability: 20000tons/year



Product Specification

- Hardness: H12, H14, H16, H18, H22, H24, H26, H32, H34, H36, H38, Etc.
- Trade Terms: FOB CIF CFR EXW
- Application: Building Construction, decoration, Chemical Industry Container
- Package: Standard Export Package
- Processing Technology: Hot Rolling, Cold Rolling
- Length: 1000mm-11000mm Or As Required
- Color: Silver, Golden, Black, Etc.
- Width: 600mm-2300mm Or As Required
- Highlight: **ASTM Alloy Aluminum Plate Sheet,
H112 Alloy Aluminum Plate Sheet,
1.5mm Aluminum Alloy Plate Sheet**



Product Description

Product Description:

Aluminium Sheet is a kind of metal material widely used in many industries. It is made of 6063 aluminum alloy, 1050 aluminum alloy and aluminum sheet metal. With excellent hardness, the Aluminium Sheet is available in H12, H14, H16, H18, H22, H24, H26, H32, H34, H36 and H38. It is also characterized by high tolerance up to $\pm 0.02\text{mm}$, and can meet the standards of ASTM, GB and EN. After surface treatment, it can achieve mill finish, anodized, brushed and embossed effects. All in all, the aluminium sheet is an ideal material for many industrial applications.

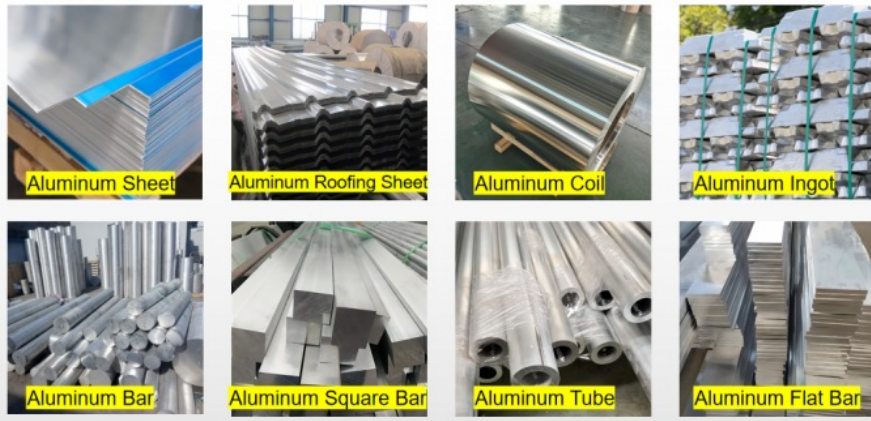
Features:

Product	Aluminum Plate
Property	Anti-Corrosion, Heat Resistant
Surface	Mill Finish
Production Process	Cold Rolled, Hot Rolled
Temper	O, H14, H24, H32, H112 Etc; T4, T651 Etc
Thickness	0.3mm - 300mm or as required
Width	100mm - 2300mm or as required
Length	1000mm - 12000mm or as required
MOQ	1 ton (According to specifications)
Payment Term	TT, LC at sight, West Union,
Package	Export wooden pallets, Craft paper, Anti-Blushing Agent.
Delivery Time	Future goods: 20-30 Work days, Ready Stock: 7-10 days.
Quality of Material	Totally free from defects like white rust, adge damage, camber, dents, holes, break lines, scratches .
Kind Attention	Specification can be customized as the customer's requirements.

Chemical Composition:

Grade	Si	Fe	Cu	Mn	Mg	Cr	Ni	Zn	Al
1050	0.25	0.4	0.05	0.05	0.05	-	-	0.05	99.5
1060	0.25	0.35	0.05	0.03	0.03	-	-	0.05	99.6
1070	0.2	0.25	0.04	0.03	0.03	-	-	0.04	99.7
1100	Si+Fe: 0.95		0.05-0.2	0.05	-	-	0.1	-	99
1200	Si+Fe: 1.00		0.05	0.05	-	-	0.1	0.05	99
1235	Si+Fe: 0.65		0.05	0.05	0.05	-	0.1	0.06	99.35
3003	0.6	0.7	0.05-0.2	1.0-1.5	-	-	-	0.1	remains
3004	0.3	0.7	0.25	1.0-1.5	0.8-1.3	-	-	0.25	remains
3005	0.6	0.7	0.25	1.0-1.5	0.20-0.6	0.1	-	0.25	remains
3105	0.6	0.7	0.3	0.30-0.8	0.20-0.8	0.2	-	0.4	remains
3A21	0.6	[0.7	0.2	1.0-1.6	0.05	-	-	0.1	remains
5005	0.3	[0.7	0.2	0.2	0.50-1.1	0.1	-	0.25	remains
5052	0.25	0.4	0.1	0.1	2.2-2.8	0.15-0.35	-	0.1	remains
5083	0.4	0.4	0.1	0.40-1.0	4.0-4.9	0.05-0.25	-	0.25	remains
5154	0.25	0.4	0.1	0.1	3.1-3.9	0.15-0.35	-	0.2	remains
5182	0.2	0.35	0.15	0.20-0.50	4.0-5.0	0.1	-	0.25	remains
5251	0.4	0.5	0.15	0.1-0.5	1.7-2.4	0.15	-	0.15	remains
5754	0.4	0.4	0.1	0.5	2.6-3.6	0.3	-	0.2	remains

More Products:



Applications:



Support and Services:

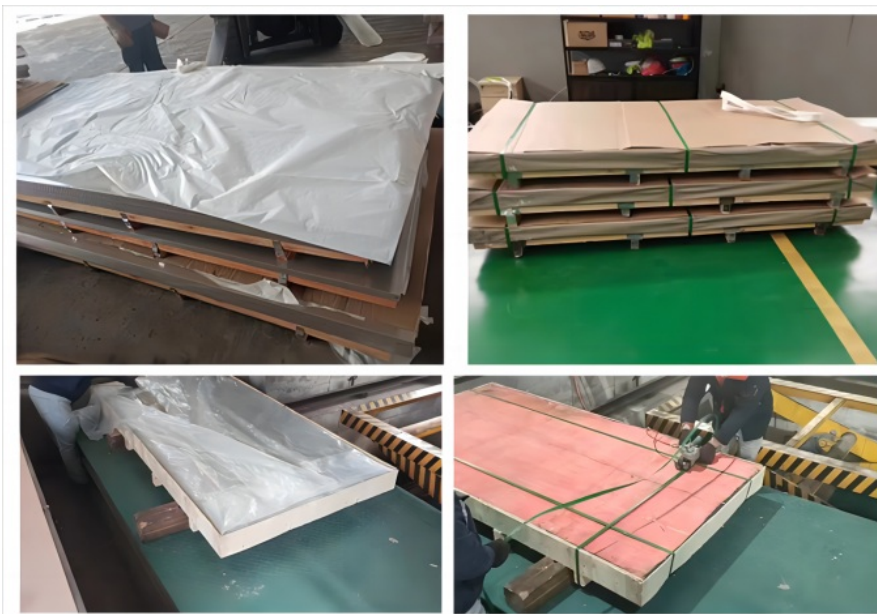
Our team of engineers and technicians are highly experienced in the design and production of these products, and are available to answer any questions or concerns you may have regarding them.

We provide technical assistance for the installation, maintenance, and repair of Aluminium Sheet products. Our comprehensive service packages include on-site visits, diagnostic testing, and training sessions to ensure your products are running optimally.

We also provide a comprehensive warranty and customer service package to cover any defects or malfunctions. Our team of technicians are available 24/7 to answer any of your questions or concerns.

Packing and Shipping:

The aluminium sheets are packed individually in plastic wraps or corrugated boxes. If necessary, multiple sheets can be packed together in one box, with the total weight not exceeding 20 kilograms. The packed aluminium sheets will then be securely sealed with tape. The aluminium sheets will be shipped via a reputable delivery service, such as FedEx or DHL. They will be tracked throughout the delivery and arrive safely at the customer's address.



FAQ:

1. Q: Can I get samples before order ?

A: Yes, of course. Usually our samples are free. we can produce by your samples or technical drawings.

2. Q: what is your delivery time ?

A: Our delivery time is about one week, timing according to the number of customers.

3. Q: What is your payment terms?

A: Our usual payment methods are T/T, L/C, Western Union, MoneyGram, payment methods can be negotiated and customized with customers.

4. Q: What do your factory do regarding quality control?

A: We have obtained ISO, CE and other certifications. From materials to products, we check every process to maintain good quality.



JIANGSU LIANZHONG METAL PRODUCTS (GROUP) CO., LTD



+8618151700330



sales02@jslzsteel.com



aluminium-sheetcoil.com

Guang Yi Columbus B Tower, Wuxi, Jiangsu, China