



2024 H12 H24 Aluminum Angle L Shape Structure Profiles 50 X 50 X 6mm ASTM B221

Our Product Introduction

Basic Information

- Place of Origin: Jiangsu,China(mainland)
- Brand Name: LIANZHONG
- Certification: ISO9001
- Model Number: 1000series, 2000series, 3000series, 5000series, 6000series, 7000series
- Minimum Order Quantity: 1 ton
- Price: Negotiable
- Packaging Details: Exporting package/wooden box package/Or per customers'requirement
- Delivery Time: 3-15 days
- Payment Terms: L/C, T/T, Western Union
- Supply Ability: 20000 Ton/Tons per Month



Product Specification

- Product Name: Aluminum Angle
- Material: 1050 1060 2024 5083 6061 6063 7075 8081
- Length: 1000-11000mm Or As Required
- Thickness: 0.4mm - 20mm Or Customized
- Alloy Or Not: Is Alloy
- Type: Equal,unequal
- Highlight: **Aluminum Angle L Shape Structure Profiles, H24 Aluminum Angle Structure Profiles, ASTM B221 Aluminum Angle Structure Profiles**



for more products please visit us on aluminium-sheetcoil.com

Product Description

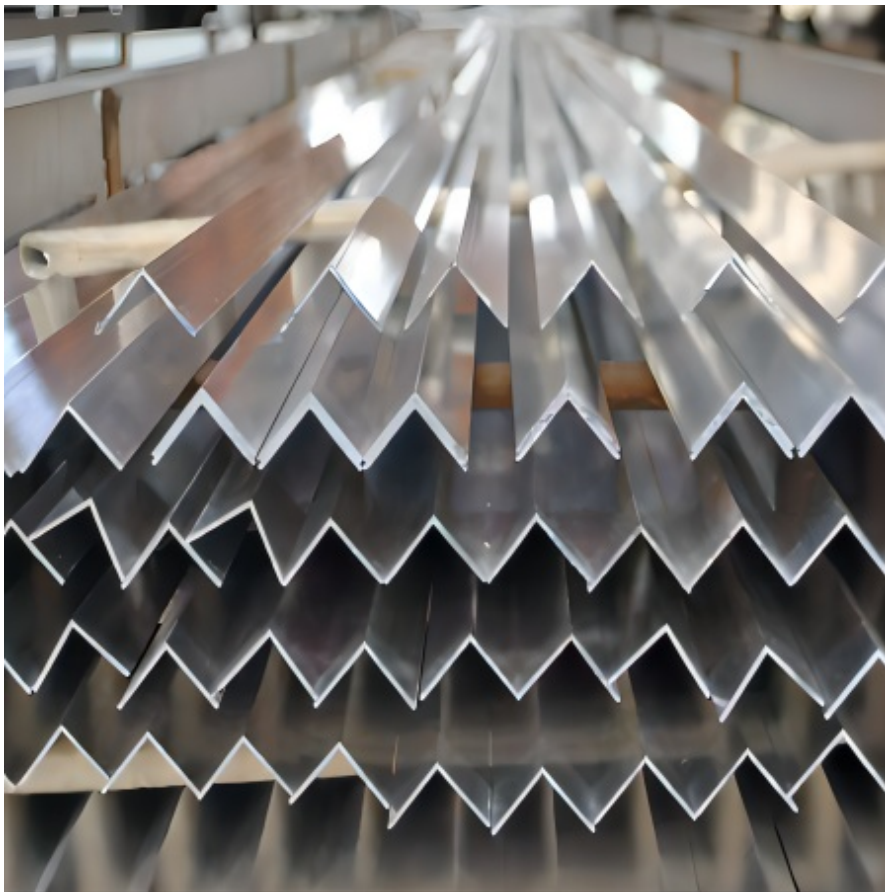
2024 H12 H24 Aluminum Angle L Shape Structure Profiles 50 x 50 x 6mm ASTM B221 Polished Surface

Product Description

Aluminum angle refers to a specific type of aluminum extrusion that has an L-shaped cross-section. It is commonly used in construction, manufacturing, and various DIY projects. The L-shape of the aluminum angle provides structural support and stability, making it suitable for applications where strength and rigidity are required.

Product Name	Aluminum Angle
Material	1000 2000 3000 4000 5000 6000 7000 8000 series
Size / Thickness	General profiles thickness from 0.8 to 5.0mm, length from 3m-6m or customized available; Anodize protection film thickness from 8~25 um, powder coating from 40 ~ 120 um.
Temper	T4, T5, T6
Length	100mm-12000mm or as the customer's request
OEM Service	Perforated, Cutting special size, Doing flatness, Surface treatment, etc
Deep processes	CNC, drilling, milling, cutting, welding, bending, assembling
Trade Terms	Ex-work, FOB, CIF, CFR, etc
Payment Terms	T/T, L/C, Western Union, etc
Package	(1) Inside : packed with plastic protective film to protect each piece
	(2) Outside: Wrap to be bundles by waterproof craft paper
MOQ	1000kg
Sample	Free and available
Export To	Ireland, Singapore, Indonesia, Ukraine, Saudi Arabia, Spain, Canada, USA, Brazil, Thailand, Korea, India, Egypt, Kuwait, Oman, Viet Nam, South Africa, Dubai, England, Holland, etc
Application	Construction field, Ships building industry, Decoration, Industry, Manufacture, Machinery and hardware fields, etc
Container size	20ft GP: 5898mm(Length)x2352mm(Width)x2393mm(High) 24-26CBM 40ft GP: 12032mm(Length)x2352mm(Width)x2393mm(High) 54CBM 40ft HC: 12032mm(Length)x2352mm(Width)x2698mm(High) 68CBM

Product Detail



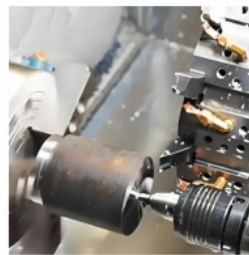
Application



SHIP TRANSPORTATION



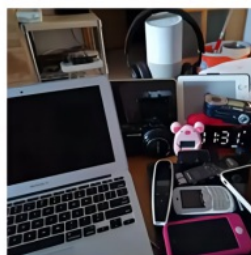
RAIL TRANSPORT



MECHANICAL PROCESSING



PETROCHEMICALS

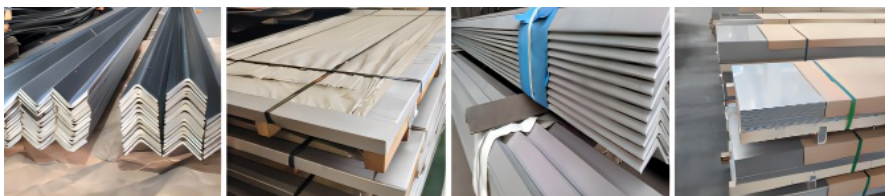


CONSUMER ELECTRONICS



CAR MANUFACTURING

Packing & Shipping





Certification



FAQ

Q: ARE YOU FACTORY OR TRADER?

A: Our company is a cold rolling manufacturer of magnetic stainless steel coil since 2016. We've gained our Export Right and become an integrated company of industry and trade in order to satisfy buyer's multi-request on different material and products.

Q: HOW TO GET A SAMPLE?

A: FREE samples are available for your checking and testing. And to get free samples, you need to send us you detailed receiving address (including post code) and your DHL/FedEx/UPS account for collecting samples, courier cost will be paid in your side.

Q: HOW TO VISIT YOUR FACTORY?

A: Most of the main cities have flights to Wuxi; you can take flight to Wuxi Shuofang International Airport.

If you come from Shanghai, it will take 2 hours by flight (every day 5 flights).

If you come from Hongkong, it will take 1 hour by flight (every day 1 flight around noon time).



JIANGSU LIANZHONG METAL PRODUCTS (GROUP) CO., LTD



+8618151700330



sales02@jslzsteel.com



aluminium-sheetcoil.com

Guang Yi Columbus B Tower, Wuxi, Jiangsu, China