

## 5083 H112 Aluminum Checkered Plate Alloy Sheet 1/4 Inch Thick Anodizing Finish

Our Product Introduction

For more products please visit us on [aluminium-sheetcoil.com](http://aluminium-sheetcoil.com)

### Basic Information

- Place of Origin: Jiangsu China
- Brand Name: Chinalco
- Certification: ASTM GB EN
- Model Number: 1050 1060 2024 5052 6061 6063 6082 7075 8011
- Minimum Order Quantity: 1 TON
- Price: Negotiable
- Packaging Details: Standard Seaworthy Packing
- Delivery Time: 7-10 days, or depends on the specific quantity
- Payment Terms: T/T,L/C
- Supply Ability: 20000tons/year



### Product Specification

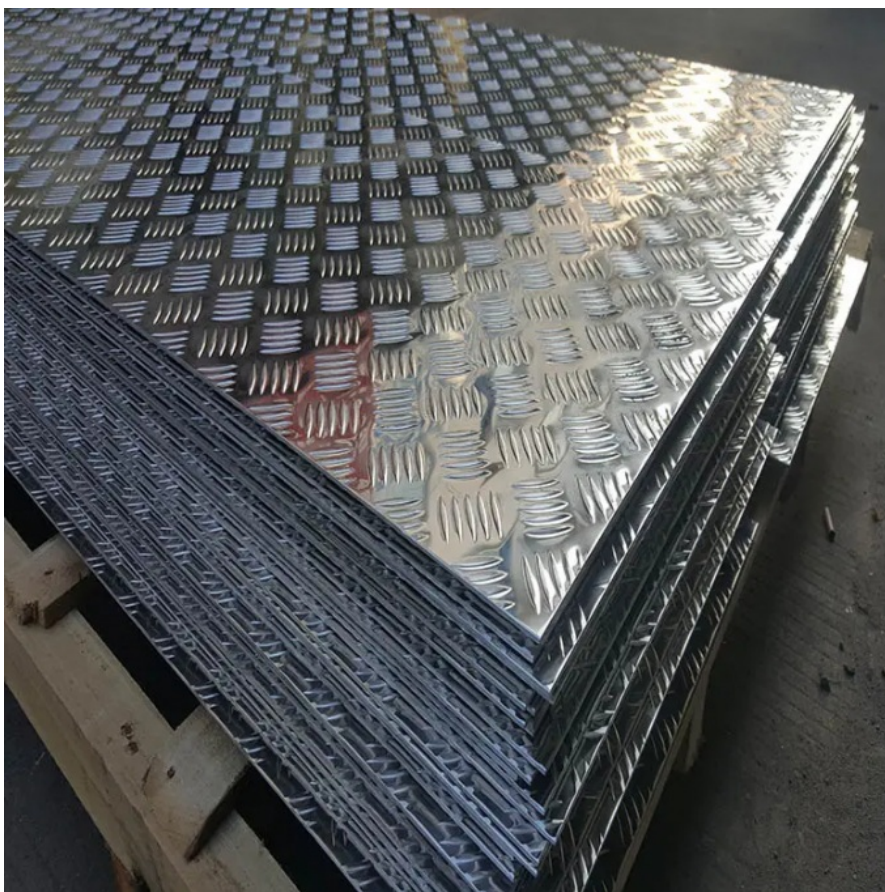
- Width: 100mm-2600mm Or As Required
- Pattern: Diamond, Orange Peel, 5 Bars, 3 Bars, 2 Bars, 1 Bar, Etc.
- Grade: 1100, 3003, 3105, 5052, 5754, 5083, 6061, 6082, Etc.
- Package: Standard Export Package, Suit For All Kinds Of Transport, Or As Required.
- Length: 1000mm-12000mm Or As Required
- Material: Aluminum
- Thickness: 0.2mm-6mm Or As Required
- Application: Decoration, Construction, Transportation, Etc.
- Highlight: **Aluminum Alloy Checkered Sheet Plate, H112 Aluminum Checkered Sheet Plate,**



## Product Description

### Product Description:

An aluminum tread plate (tread brite / diamond plate) is a piece of material that is mostly used for safety reasons. The tread diamond pattern, means that small metallic parts pop out a few mm over the main surface, thus creating a firmer grip between your shoe and the plate. This is basically what accounts for the plate's nonskid properties, and why they are so widely used in industrial sites.



### Technical Parameters:

Attribute	Value
Pattern	Diamond, Orange Peel, 5 Bars, 3 Bars, 2 Bars, 1 Bar, Etc.
Surface Treatment	Mill Finish, Coated, Anodizing, Embossing, Etc.
Grade	1100, 3003, 3105, 5052, 5754, 5083, 6061, 6082, Etc.
Width	100mm-2600mm Or As Required
Application	Decoration, Construction, Transportation, Etc.
Payment Term	T/T, L/C, Etc.
Thickness	0.2mm-6mm Or As Required
Price Term	FOB, CFR, CIF, EXW, Etc.
Edge	Mill Edge, Cut Edge
Temper	H14, H16, H18, H22, H24, H26, O, Etc.

### Applications:



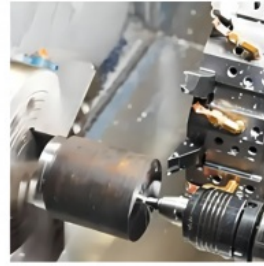
Aluminum Checkered Plate is a kind of alloy aluminum checkered plate, which is made of different grades of aluminum alloy such as 1100, 3003, 3105, 5052, 5754, 5083, 6061 and 6082. It is designed for a variety of applications, such as flooring, truck bed, stair treads, ship decks, etc. The alloy aluminum checkered plate has a good anti-skid effect and is widely used in many industries.



**SHIP TRANSPORTATION**



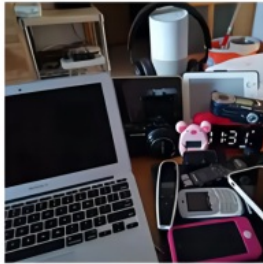
**RAIL TRANSPORT**



**MECHANICAL PROCESSING**



**PETROCHEMICALS**



**CONSUMER ELECTRONICS**



**CAR MANUFACTURING**

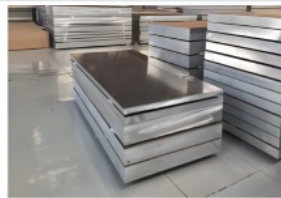
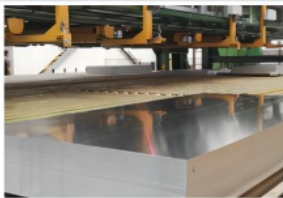
### **Support and Services:**

We are committed to providing superior technical support and service for Aluminum Checkered Plate. Our knowledgeable professionals are available to help you with product selection, installation, maintenance, and other technical issues. We offer free technical advice over the phone or online. We also provide on-site service for maintenance and installation. We have a wide variety of spare parts for our products to ensure that you get the best performance out of your Aluminum Checkered Plate.

### **Packing and Shipping:**

The Aluminum Checkered Plate will be packaged in a cardboard box.

The product will be shipped via air freight.





## FAQ:

Q: Are you trading company or manufacturer?

A: We are professional manufacturer for steel sheet, and our company also is a very professional and technical foreign trade company for steel products. We have more export experience with competitive price and best after-sales service. Apart from this, we can provide a wide range of steel products to meet the requirement of customer.

Q: Will you delivery the goods on time?

A: Yes, we promise to provide best quality products and delivery on time no matter if the price change lot or not. Honesty is our company's tenet.

Q: Do you provide samples ? is it free or extra?

A: The sample could can provide for customer with free, but the freight will be covered by customer account. The sample freight will be returned to customer account after we cooperate.



**JIANGSU LIANZHONG METAL PRODUCTS (GROUP) CO., LTD**



+8618151700330



sales02@jslzsteel.com



aluminium-sheetcoil.com

Guang Yi Columbus B Tower, Wuxi, Jiangsu, China