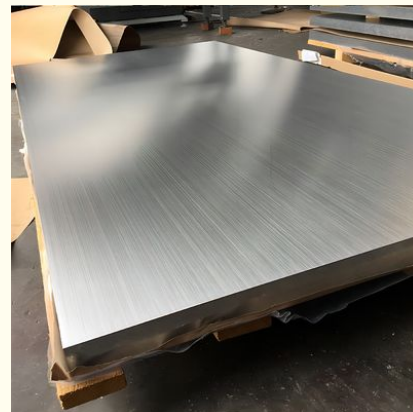


5052 6061 Aluminum Sheet T6 2mm 4mm Thick Embossed 1000mm Width

Our Product Introduction

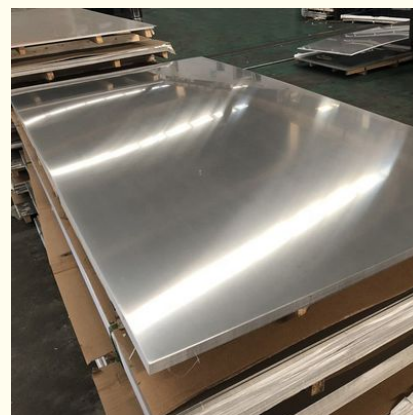
Basic Information

- Place of Origin: Jiangsu, China
- Brand Name: Chinalco
- Certification: ISO9001
- Model Number: 1000series, 2000series, 3000series, 5000series, 6000series, 7000series
- Minimum Order Quantity: 1ton
- Price: Negotiable
- Packaging Details: Exporting package/wooden box package/Or per customers' requirement
- Delivery Time: 3-15 days
- Payment Terms: L/C, T/T, Western Union
- Supply Ability: 20000 Ton/Tons per Month



Product Specification

- Product Number: 5052 6061
- Material: Aluminum Alloy Metal
- MOQ: 3 Tons
- Alloy Or Not: Is Alloy
- Delivery Time: 7-10 Days, depends On The Specific Quantity
- Surface: Embossed, polished And So On
- Highlight: 6061 aluminum sheet 2mm, embossed 6061 aluminum sheet, 6061 aluminum plate 4mm



for more products please visit us on aluminium-sheetcoil.com

Product Description

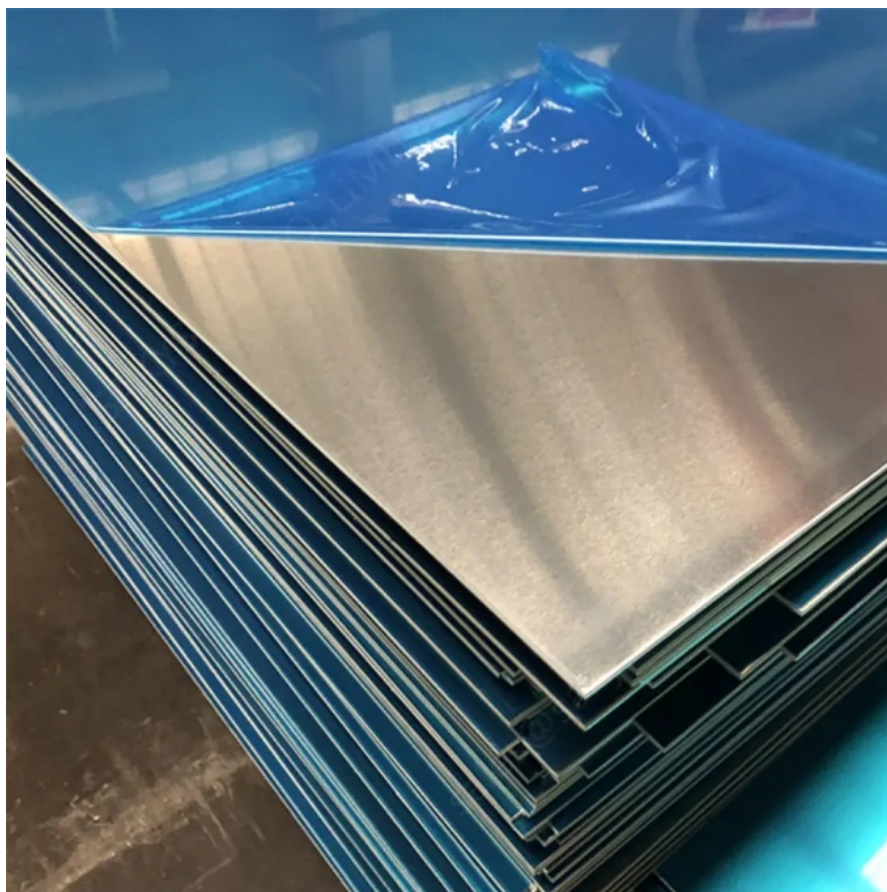
5052 6061 T6 Aluminum Sheet Alloy Plate 2mm 4mm Thick Embossed 1000mm Width

Product Description

Aluminum sheets and plates are lightweight and flat or formed with a surface texture that helps increase traction and overall rigidity. Standard aluminum sheets are also known as flat stock. They are solid and provide a good strength-to-weight ratio. Aluminum expanded and perforated sheets have openings that allow light, air, and water to pass through. Aluminum textured sheets and plates have a raised surface for an improved look and to increase surface traction.

Product Name	Aluminum sheet/plate	
Grade	1000 Series	Industrial Pure Aluminum(1050,1060 ,1070, 1100)
	2000 Series	Aluminum-copper alloys(2024(2A12), LY12, LY11, 2A11, 2A14(LD10), 2017, 2A17)
	3000 Series	Aluminum-manganese alloys(3A21, 3003, 3103, 3004, 3005, 3105)
	4000 Series	Al-Si alloys(4A03, 4A11, 4A13, 4A17, 4004, 4032, 4043, 4043A, 4047, 4047A)
	5000 Series	Al-Mg alloys(5052, 5083, 5754, 5005, 5086,5182)
	6000 Series	Aluminum Magnesium Silicon Alloys(6063, 6061, 6060, 6351, 6070, 6181, 6082, 6A02)
	7000 Series	Aluminum, Zinc, Magnesium and Copper Alloys(7075, 7A04, 7A09, 7A52, 7A05)
Thickness	aluminum sheet:0.2-6.0mm aluminum plate:6.0-25.0mm	
Width	10-2500mm	
Standard	GB, JIS, DIN, ASTM	
Surface treatment	Brushed, Mirror, Embossed, Sandblasted, etc	
Temper	O/H111 H112 H116/H321 H12/H22/H32 H14/H24/H34/H16/H26/H36 H18/H28/H38 H114/H194, etc.	
Type	Sheet/plate	
Package	Standard export package,such as wooden box or as required	

Product Detail



Application



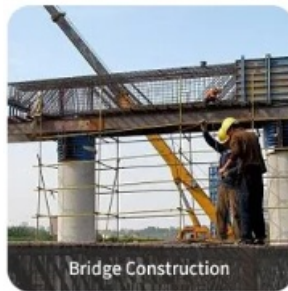
Automobile Manufacturing



Construction Engineering



The Transportation



Bridge Construction



Casting Machinery



Factory Work

Packing & Shipping



The Sample Delivery



Certificate



FAQ

Q: ARE YOU FACTORY OR TRADER?

A: Our company is a cold rolling manufacturer of magnetic stainless steel coil since 2016. We've gained our Export Right and become an integrated company of industry and trade in order to satisfy buyer's multi-request on different material and products.

Q: HOW TO GET A SAMPLE?

A: FREE samples are available for your checking and testing. And to get free samples, you need to send us your detailed receiving address (including post code) and your DHL/FedEx/UPS account for collecting samples, courier cost will be paid in your side.

Q: HOW TO VISIT YOUR FACTORY?

A: Most of the main cities have flights to Wuxi; you can take flight to Wuxi Shuofang International Airport.

If you come from Shanghai, it will take 2 hours by flight (every day 5 flights).

If you come from Hongkong, it will take 1 hour by flight (every day 1 flight around noon time).



JIANGSU LIANZHONG METAL PRODUCTS (GROUP) CO., LTD



+8618151700330



sales01@jslzsteel.com



aluminium-sheetcoil.com

Guang Yi Columbus B Tower, Wuxi, Jiangsu, China