

## AISI 5083 Alloy 5 Bar Aluminium Checker Plate 4 X 8 Mill Finish For Decoration

### Our Product Introduction

#### Basic Information

- Place of Origin: Jiangsu, China
- Brand Name: LIANZHONG
- Certification: ISO9001
- Model Number: 1000series, 2000series, 3000series, 5000series, 6000series, 7000series
- Minimum Order Quantity: 1ton
- Price: Negotiable
- Packaging Details: Exporting package/wooden box package/Or per customers' requirement
- Delivery Time: 3-15 days
- Payment Terms: L/C, T/T, Western Union
- Supply Ability: 2000 Ton/Tons per Month



#### Product Specification

- Product Name: Aluminum Checker Plate
- Material: 1050 1060 3003 5052 5083 6061 6063 7075
- Surface: 1 Bar, 2 Bar, 5 Bar, Tread, diamond
- Thickness: 0.6-20mm Or As Required
- Width: 600-2300mm Or As Required
- Trade Terms: FOB CIF CFR EXW
- Highlight: **aisi 5 bar aluminium checker plate, 5 bar aluminium checker plate 1.8mm**





## Product Description

### AISI 5083 Alloy 5 Bar Aluminium Checker Plate 4 X 8 Mill Finish For Decoration

#### Product Description

Aluminum is a silver-white metal that is the third most abundant in the Earth's crust after oxygen and silicon. The density of aluminum is 34.61 percent that of iron and 30.33 percent that of copper, so it is also called light metal. Aluminum is the world's output and consumption are second only to steel non-ferrous metal. Aluminum has a density of only 2.7103g/cm<sup>3</sup>, about one-third that of steel, copper, or brass. Because of its light material, aluminum is often used in the manufacture of cars, trains, subways, ships, aircraft, rockets, spacecraft and other land, sea and air vehicles to reduce weight and increase loading capacity.

Product Name	Aluminium checker sheet
Material	1050.1050A.1060.1070.1070A.1100.1200.3003.4043.491.5005.5A05.5A06 5083.6061.6063
Temper	O H12.H14.H16.H18.H22.H24.H26.F
Standard	GB/T 20250-2006 Q/HJ 007-06 YS/T 67-2012 GB/T 5584-2009/3954-2008 GB/T 8733 2007etc
Size	Thickness : 0.5mm-200mm or as required
	Width : 600mm-2300mm or as required
	Length : 1000mm.1250mm.2400mm.6000mm or as required
Treatment	Cold rolled/Hot rolled
Surface	1 Bar,2 Bar,5 Bar, tread,diamond
Price term	Ex-Work,FOB,CIF,CFR,etc
Payment Term	TT,L/C,etc
Export to	Ireland,Singapore,Indonesia,Ukraine,Saudi Arabia,Spain,Canada,USA,Brazil,Thailand,Korea, India,Egypt,Kuwait,Oman,Viet Nam,South Africa,Dubai,England,Holland etc
Delivery time	1.Immediately delivery after received the payment if goods in stock 2.7-10 working days for normaly production
MOQ	1 metric ton

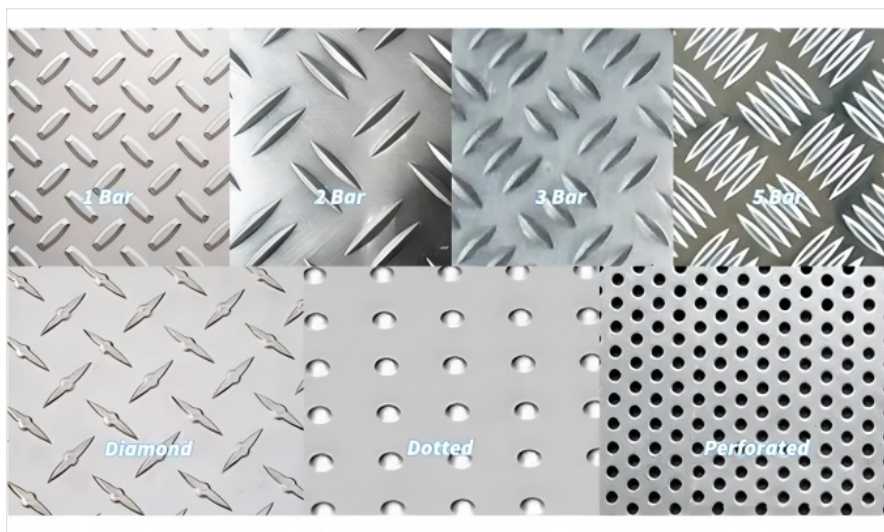
1000 Series	Industrial Pure Aluminum(1050,1060 ,1070, 1100)
2000 Series	Aluminum-copper alloys(2024(2A12), LY12, LY11, 2A11, 2A14(LD10), 2017, 2A17)
3000 Series	Aluminum-manganese alloys(3A21, 3003, 3103, 3004, 3005, 3105)
4000 Series	Al-Si alloys(4A03, 4A11, 4A13, 4A17, 4004, 4032, 4043, 4043A, 4047, 4047A)
5000 Series	Al-Mg alloys(5052, 5083, 5754, 5005, 5086,5182)
6000 Series	Aluminum Magnesium Silicon Alloys(6063, 6061, 6060, 6351, 6070, 6181, 6082, 6A02)
7000 Series	Aluminum, Zinc, Magnesium and Copper Alloys(7075, 7A04, 7A09, 7A52, 7A05)

#### Product Detail

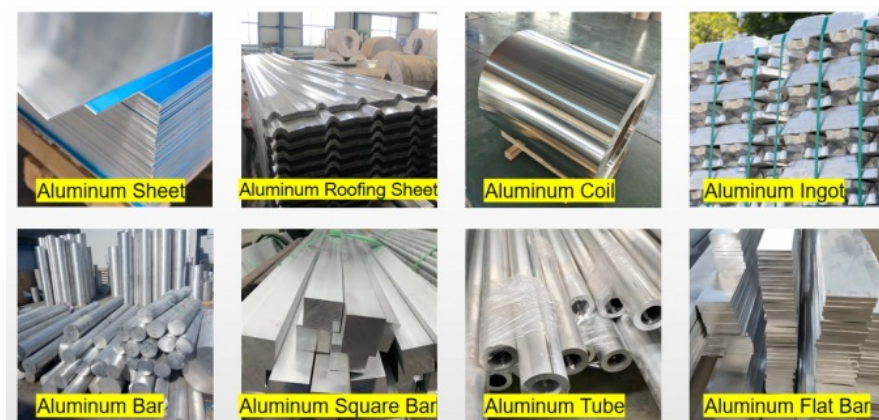




Type of Checker Plate



Recommend Product



Application





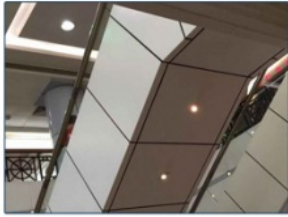
Further making utensil



ceilings,walls,ect



The appearance of the building



Elevator decoraction

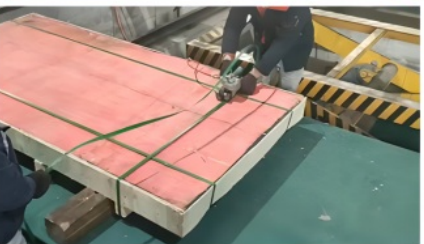


Signs,nameplate,bags making



Aluminum reefer containers

## Packing & Shipping



## Certificate





## FAQ

Q: Can you send samples?

A: Of course, we can send samples to all over the world, our samples are free, but customers need to bear the courier cost.

Q: What product information do I need to provide?

A: You need to provide grade, width, thickness, coating and tons you need to buy.

Q: What are the shipping ports?

A: In general, we ship from Shanghai, Tianjin, Qingdao, Ningbo ports, you can choose other ports according to your needs.



**JIANGSU LIANZHONG METAL PRODUCTS (GROUP) CO., LTD**



+8618151700330



sales02@jslzsteel.com



aluminium-sheetcoil.com

Guang Yi Columbus B Tower, Wuxi, Jiangsu, China