

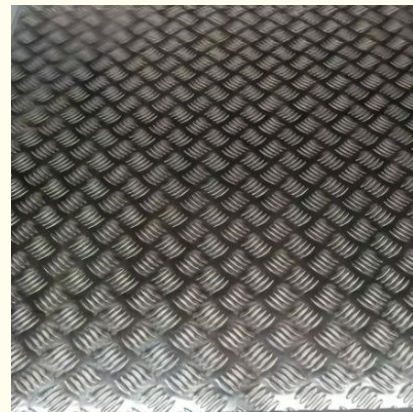


ASTM 5005 Aluminum Checkered Plate For Construction 200-2600mm Width

Our Product Introduction

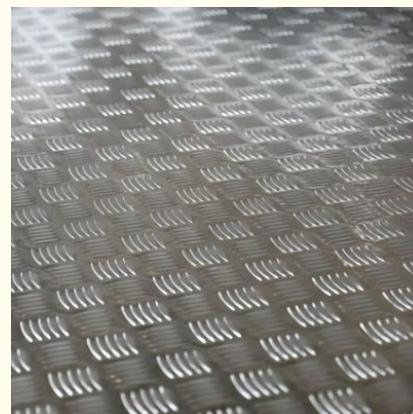
Basic Information

- Place of Origin: Jiangsu, China
- Brand Name: LIANZHONG
- Certification: ISO9001
- Model Number: 1000series, 2000series, 3000series, 5000series, 6000series, 7000series
- Minimum Order Quantity: 3ton
- Price: Negotiable
- Packaging Details: Exporting package/wooden box package etc
- Delivery Time: 3-15 days
- Payment Terms: L/C, T/T, Western Union
- Supply Ability: 20000 Ton/Tons per Month



Product Specification

- Type: Plate
- Application: Construction, Decoration, Boat
- Width: 200-2600mm
- Length: Customized
- Keyword: Aluminum Checkered Plate
- Tolerance: $\pm 1\%$
- Highlight: **200mm aluminium tread plate sheet, aluminum tread plate sheets 2600mm, 5005 Aluminum Checkered Plate**



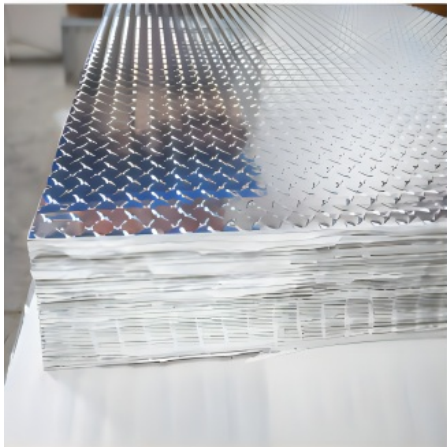
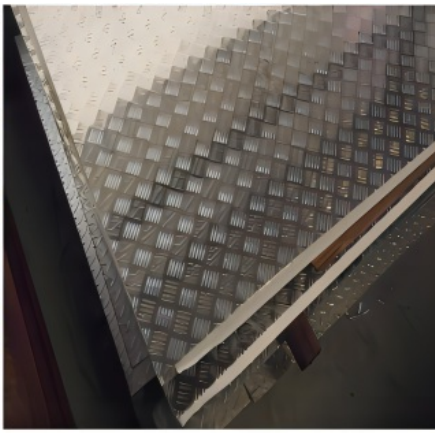
Product Description

ASTM 5005 Aluminium Checkered Plate For Construction 200-2600mm Width

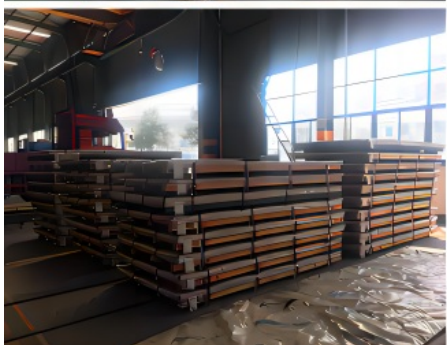
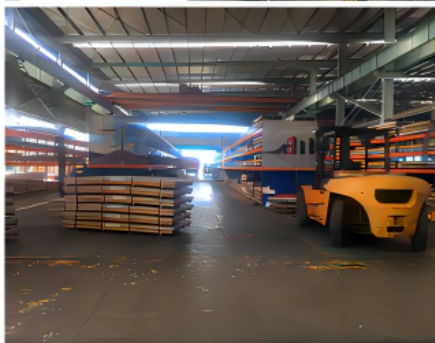
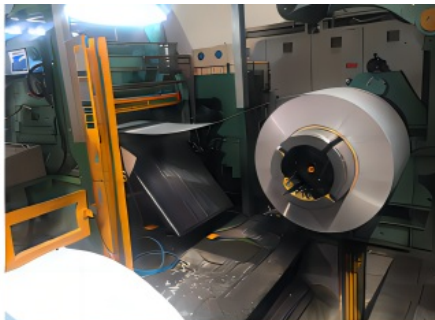
Aluminum plate refers to the aluminum material with a thickness of more than 0.2mm to less than 500mm, a width of more than 200mm and a length of less than 16m, which is called aluminum plate or aluminum sheet. Aluminum plate refers to the rectangular plate rolled from aluminum ingot, which is divided into pure aluminum plate, alloy aluminum plate, thin aluminum plate, medium thickness aluminum plate and pattern aluminum plate. Aluminum plates are generally divided into the following two types: 1. According to alloy composition: High purity aluminum plate (rolled from high purity aluminum with content above 99.9) Pure aluminum plate (the composition is basically rolled from pure aluminum) Alloy aluminum plate (composed of aluminum and auxiliary alloys, usually aluminum copper, aluminum manganese, aluminum silicon, aluminum magnesium, etc.) Composite aluminum plate or welding plate (special purpose aluminum plate material is obtained by means of multiple material compounding) Aluminum clad aluminum plate (the outer edge of aluminum plate is coated with thin aluminum plate for special purposes) 2. Divided by thickness: (unit: mm) Sheet 0.15-2.0 Conventional board 2.0-6.0 Middle plate 6.0-25.0 Thick plate 25-200.

| Alloy No. | Thickness (mm) | Width (mm) | Length (mm) | Temper |
|---|---|------------|-------------|----------------------------------|
| A1050,A1060,A1070,A1100 | 1.0-10 | 20-2300 | 20-8000 | H12,H22,H14,H16,H18,H24,H26,etc |
| 3A21,A3003,A3105,A3004 | 1.0-10 | 20-2300 | 20-8000 | H14,H18,H24,etc |
| A5052,A5005,A5083,A5754 | 1.0-10 | 20-2300 | 20-8000 | H18,H24,H32,H34,H111,H112,etc |
| A6061,A6082,A6063 | 1.0-10 | 20-2300 | 20-8000 | T4,T6,,etc |
| A8011 | 1.0-10 | 20-2300 | 20-8000 | H12,H22,H14,H16,H18,H24,H26, etc |
| Packing : Export wooden pallets. The bundle weight not exceed 2MT. Loading:by 1x20GP, 1X20GP can load about 18MT | | | | |
| Standards:ASTM-B209. EN573-1, GB/T3880.1-2006 | | | | |
| Quality of material: totally free from defects like white rust, oil patches, roll marks, edge damage, camber, dents, holes, break lines, scratches and free from coil set | | | | |
| Application : Mainly used insigns, billboards, building exterior decoration, bus body, high-rise buildings and factories wall decoration, kitchen sink, lamp, fan leaves, with pieces of electronic, chemical equipment, sheet metal processing parts, deep drawing or spinning hollowware, welding parts, heat exchangers, bell surface and disk, plate, kitchenware, decorations, reflective devices, ect | | | | |
| MOQ | 5 tons | | | |
| Payment term: | T/T,L/C | | | |
| Delivery Time | 15 days after 30% T/T payment or receiving L/C copy | | | |
| Kind attention : Specifications can be customized as the customer's requirements. | | | | |

Product Details



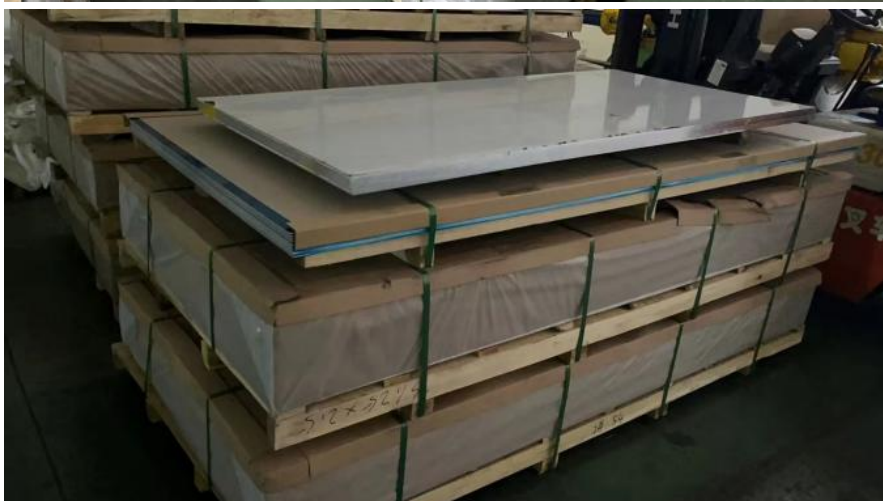
Warehouse



Application



Packing and Shippment



Certification



JIANGSU LIANZHONG METAL PRODUCTS (GROUP) CO., LTD



+8618151700330



sales01@jslzsteel.com



aluminium-sheetcoil.com

Guang Yi Columbus B Tower, Wuxi, Jiangsu, China