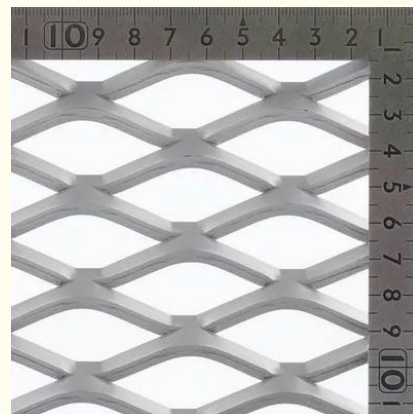


Protected Mesh Aluminum Expanded Metal Mesh Rustproof Sheets 14x14 ISO9001

Our Product Introduction

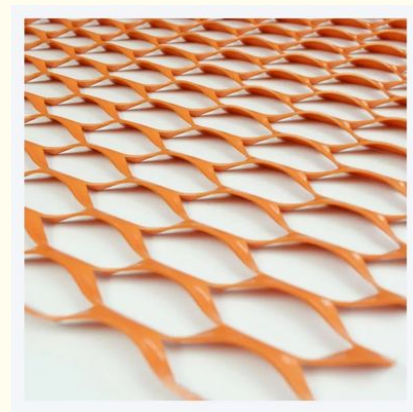
Basic Information

- Place of Origin: Jiangsu, China
- Brand Name: LIANZHONG
- Certification: ISO9001
- Model Number: 1000series, 2000series, 3000series, 5000series, 6000series, 7000series
- Minimum Order Quantity: 3ton
- Price: Negotiable
- Packaging Details: Exporting package/wooden box package etc
- Delivery Time: 3-15 days
- Payment Terms: L/C, T/T, Western Union
- Supply Ability: 20000 Ton/Tons per Month

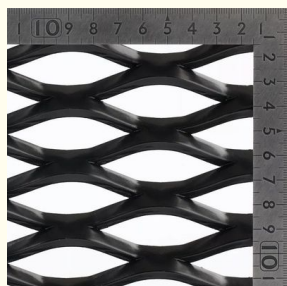


Product Specification

- Key Word: Aluminum Wire
- Technique: Woven
- Wire Diameter: 0.6mm-0.8mm
- Width: 700-1500mm
- Mesh: 14*14
- Length: 30m
- Highlight: expanded aluminum panels ISO9001, expanded aluminium mesh sheets 14x14, aluminum expanded metal mesh rustproof



More Images



for more products please visit us on aluminium-sheetcoil.com

Product Description

Aluminum Mesh Protected Mesh Expanded Metal Mesh Expanded Metal Sheet

Description

1. Material:

low-carbon wire, 304/316/316L stainless steel, aluminium or cooper

2. LWD&SWD:

5*10MM, 10*20MM, 20*40MM, 30*60MM ect..

3. Strand Width:

1-20 MM

4. Thickness:

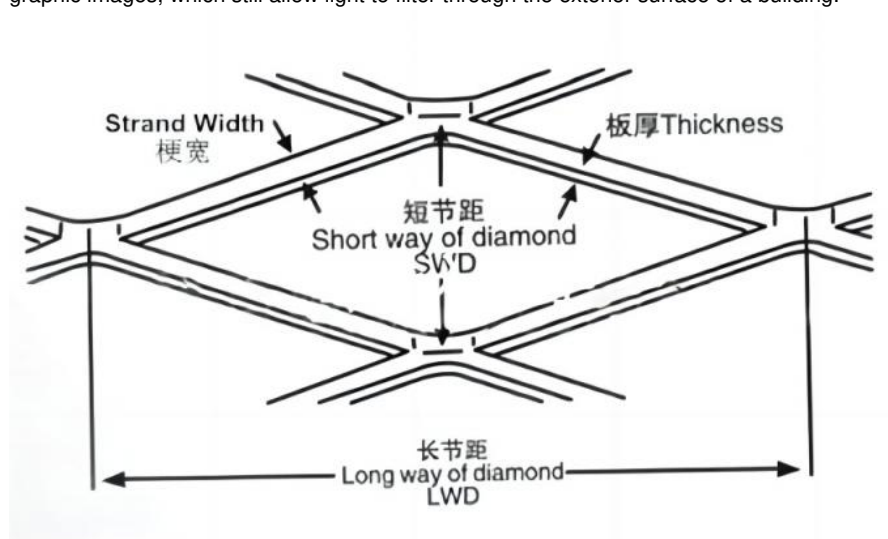
1-3 MM diamond hole expanded sheet metal wire mesh railing infill panel/staircase PVC Coated expanded metal Mesh Fencing

5. Application:

What is expanded metal used for?

Expanded metal is a type of sheet metal which has been cut and stretched to form a regular pattern (often diamond-shaped) of metal mesh-like material. It is commonly used for fences and grates, and as metallic lath to support plaster or stucco.

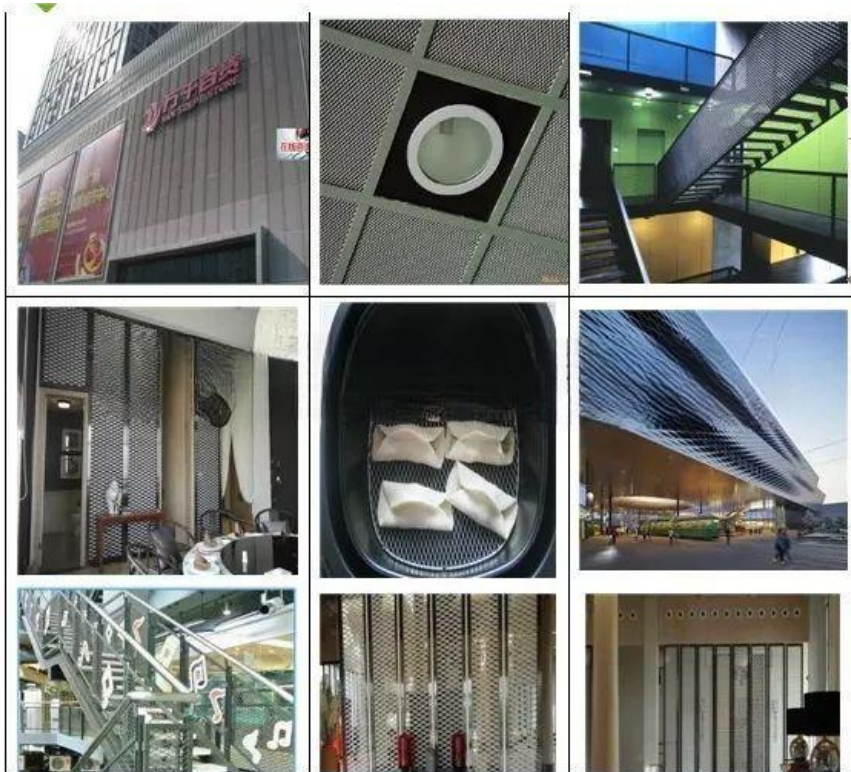
In contemporary architecture, expanded metal has been used as an exposed facade or screen material which can be formed into simple or complex decorative shapes. Photographic images may be printed on the surface, producing textures or large graphic images, which still allow light to filter through the exterior surface of a building.



Product Details



Application



Packing and Shippment



Certificate





+86 151 700000



sales02@jszsteel.com



aluminum-sheet.com

Guang Yi Columbus B Tower, Wuxi, Jiangsu, China