



Embossing Aluminium Checkered Sheet Al 5754 H114 2024 5 Bar Pattern Customized Cutting

Our Product Introduction

Basic Information

- Place of Origin: Jiangsu, China
- Brand Name: LIANZHONG
- Certification: ISO9001
- Model Number: 1000series, 2000series, 3000series, 5000series, 6000series, 7000series
- Minimum Order Quantity: 1ton
- Price: Negotiable
- Packaging Details: Exporting package/wooden box package/Or per customers'requirement
- Delivery Time: 3-15 days
- Payment Terms: L/C, T/T, Western Union
- Supply Ability: 2000 Ton/Tons per Month



Product Specification

- Product Name: Aluminum Checkered Plate
- Material: 1050 1060 3003 2024 5052 6061 6063 6082 7075
- Thickness: 0.5-30mm, or As Required
- Width: 600-2300mm Or As Required
- Surface Treatment: Embossed, diamond
- Processing Service: Bending, Decoiling, Punching, Cutting
- Highlight: 4mm aluminium checkered sheet,
2024 aluminium checkered sheet,
embossing 5 bar aluminium checker plate



Product Description

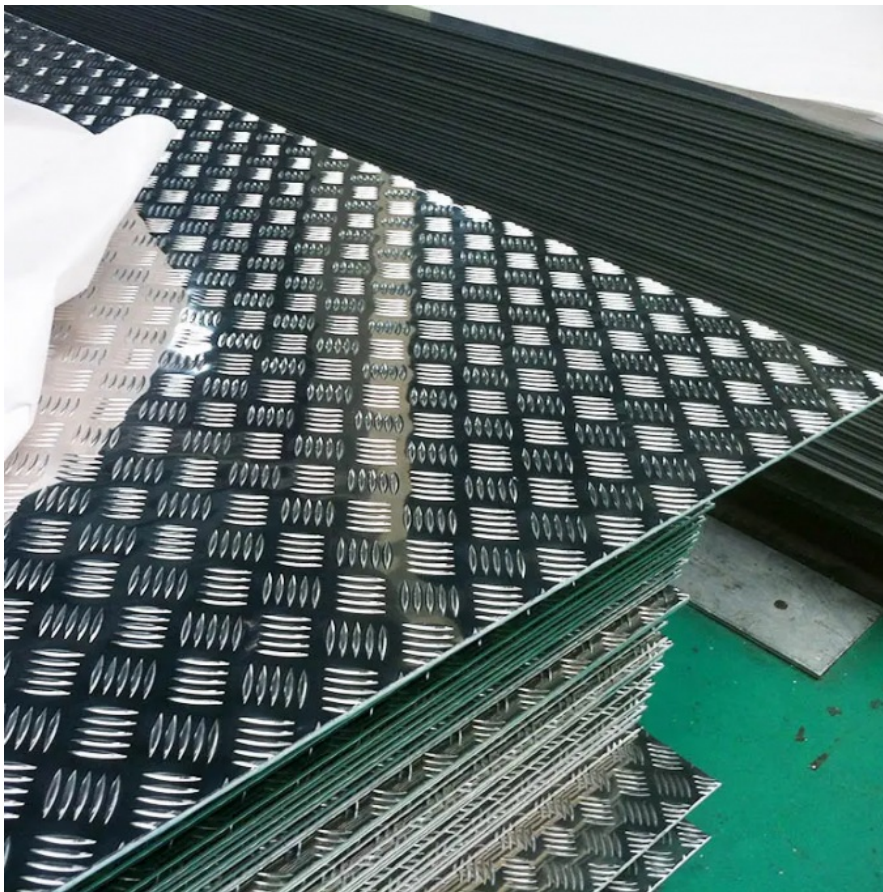
Embossing Aluminium Checkered Sheet Al 5754 H114 2024 5 Bar Pattern Customized Cutting

Product Description

Aluminum checker plate is also called aluminum chequered plate. It is made from aluminum sheet. One side of the surface is embossed with [diamond plate](#) pattern. The different pattern can fit different environments and various usage. Aluminum checker plate is better for antirust and lighter than other materials, it can be used for many years and can retain high value after being replaced. This type of checkered plate is widely used as antiskid plate in both commercial and industrial flooring needs and also used in the vehicles, such as the ambulance and the firework truck.

Product Name	Embossed aluminum checkerd sheet
Standard	ASTM GB/T EN
Alloy	1050 1060 1100 3003 3004 3005 3105 5052 5754 5083 5086 6061 6063 7075 8011 etc
Temper	O H12/H22 H14/H24, H16, H18, H32,H111, T6,T4 etc
Thickness	0.5mm-30.0mm or as required
Width	20-2600mm or as required
Length	1000mm,2000mm,2440mm,3000mm,3048mm,6000mm, or as required
Emboss Patterns	Small 5 bar, big 5 bar, 3 bar, 2 bar, 1bar, Diamond, propeller, pointer, etc
Advantages	1. Accurate size, good anti-slip effect,wide range of applications 2. Strong plasticity, easy forming and excellent processing performance. 3. Embossed aluminum sheet can form a dense and strong oxide film on aluminum surface to prevent the intrusion of oxygen, so it has good corrosion resistance. 4. Good elongation and tensile strength, fully able to meet the normal processing requirements (stamping, stretching), high formability 5. The surface quality of aluminum checker plate is good, no oil spots, waves, scratches, roller marks, neat trimming, no burrs.
Payment terms	T/T, L/C, and Western Union
Price terms	FOB CIF CFR EXW etc
Packag e	Standard seaworthy export wooden pallets
Applicati on	Floor of airplane, light rail and vehicles; deck of vessel, stairs, ladders, shelves,temporary scaffolding, platform, suspension beam, elevators, etc.

Product Details



Chemical Composition

Chemical Analysis of aluminum alloy diamond plate										
Alloy	Si	Fe	Cu	Mn	Mg	Cr	Ni	Zn	Ti	Al
1050	0.25	0.4	0.05	0.05	0.05	-	-	0.05	0.03	Remains
1060	0.25	0.35	0.05	0.03	-	-	-	-	-	Remains
1070	0.2	0.25	0.04	0.03	0.03	-	-	-	-	Remains
1100	0.95	0.95	0.05-0.2	0.05	-	-	0.1	-	-	Remains
1200	1	1	0.05	0.05	-	-	-	0.1	0.05	Remains
3003	0.6	0.7	0.05-0.2	1.0-1.5	-	-	-	0.1	-	Remains
5005	0.3	0.7	0.2	0.2	0.5-1.1	0.1	-	0.25	-	Remains
5042	0.2	0.35	0.15	0.2-0.5	3.0-4.0	0.1	-	0.25	0.1	Remains
5052	0.25	0.4	0.1	0.1	2.2-2.8	0.15-0.35	-	0.1	-	Remains
5083	0.4	0.4	0.1	0.4-1.0	4.0-4.9	0.05-0.25	-	0.25	-	Remains
5754	0.4	0.4	0.1	0.5	2.6-3.6	0.3	-	0.2	-	Remains
6061	0.4-0.8	0.7	0.15-0.4	0.15	0.8-1.2	0.04-0.35	-	0.25	-	Remains
6063	0.2-0.6	0.35	0.1	0.1	0.45	0.1	-	0.1	-	Remains
6082	0.7-1.3	0.5	0.1	0.4-1.0	0.6-1.2	0.25	-	0.2	-	Remains
7050	0.12	0.15	2.0-2.6	0.1	1.9-2.6	0.04	-	5.7-6.7	0.06	Remains
7075	0.4	0.5	1.2-2.0	0.3	2.1-2.9	0.18-0.28	-	5.1-6.1	0.2	Remains

Application

Aluminum Checker Plate are widely used as loading floor, or used at decorative wall material, Loading Ramps, Stair Tread, Flooring, Dock Plate, Dock Board, Decorative purposes, Fire Trucks, Ambulances, Recreational Vehicles, Catwalks, Walkways, Truck bed, Trailer floors and etc.



For aerospace
parts



Sign boards



Welding



Car manufacturer

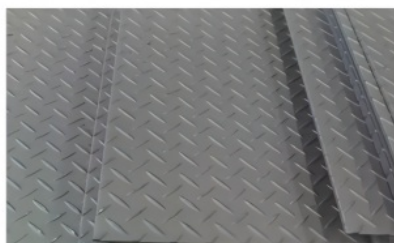
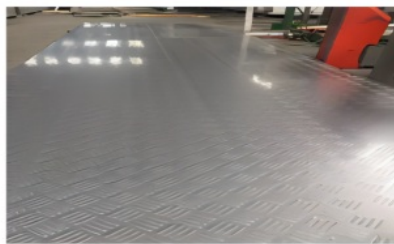
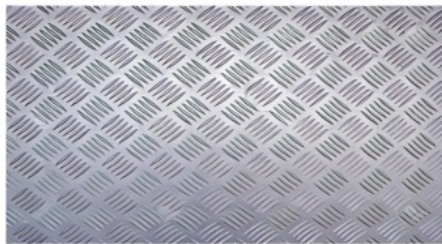


Shipbuilding



carriage

Surface Treatment



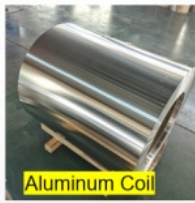
Recommend Products



Aluminum Sheet



Aluminum Roofing Sheet



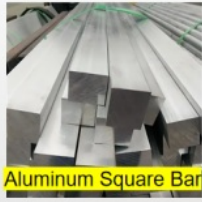
Aluminum Coil



Aluminum Ingot



Aluminum Bar



Aluminum Square Bar



Aluminum Tube



Aluminum Flat Bar

Packing & Shipping



Certification



FAQ

1.What is your paying terms?

Our usual paying terms are 30%TT as deposit and balance paid after seeing copy of bill of loading. For clients cooperated for more than one year, we accept 20% prepay. Beside we do business also under LC terms.

2.How long is your delivery time?

For the goods we have in stocks, we deliver the goods within 5 days. If it is a production order with volume not above 200tons, the delivery time will usually be within 20days after sealing contract. And the delivery time shall be slightly longer for order volume above 200tons.

3.Before cooperation we want a sample for inspecting of quality, is that okay?

We can provide a free sample for you shall sample value not above 30USD, you only need to pay the express charge. For a sample valued more than 30USD, the express charge and just one half of sample value is on the account of you, and we afford the other half.

4.Does your company accept third party inspection?

The answer is yes. Especially for new client, they have concern on product quality and quantity, so they authorized the third party inspection like SGS and BV several times to inspect the goods in stead of them, and we coordinated with their work well.



JIANGSU LIANZHONG METAL PRODUCTS (GROUP) CO., LTD



+8618151700330



sales02@jslzsteel.com



aluminium-sheetcoil.com

Guang Yi Columbus B Tower, Wuxi, Jiangsu, China