

## 1100 Black Aluminium Chequered Plate 1000mm To 1500mm

### Our Product Introduction

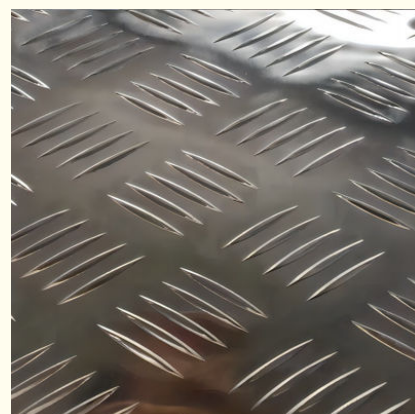
#### Basic Information

- Place of Origin: Jiangsu, China
- Brand Name: LIANZHONG
- Certification: ISO9001
- Model Number: 1000series, 2000series, 3000series, 5000series, 6000series, 7000series
- Minimum Order Quantity: 3ton
- Price: Negotiable
- Packaging Details: Exporting package/wooden box package etc
- Delivery Time: 3-15 days
- Payment Terms: L/C, T/T, Western Union
- Supply Ability: 20000 Ton/Tons per Month



#### Product Specification

- Application: Building Materials
- Model Number: 1100
- Standard: ASTM, JIS, AISI, DIN, EN, GB
- Width: 1000mm--1500mm
- Delivery Time: Within 7 Days
- Keyword: Aluminum Checkered Plate
- Highlight: **1000mm black checker plate aluminium, 1100 aluminium chequered plate, alloy checker plate 1500mm**



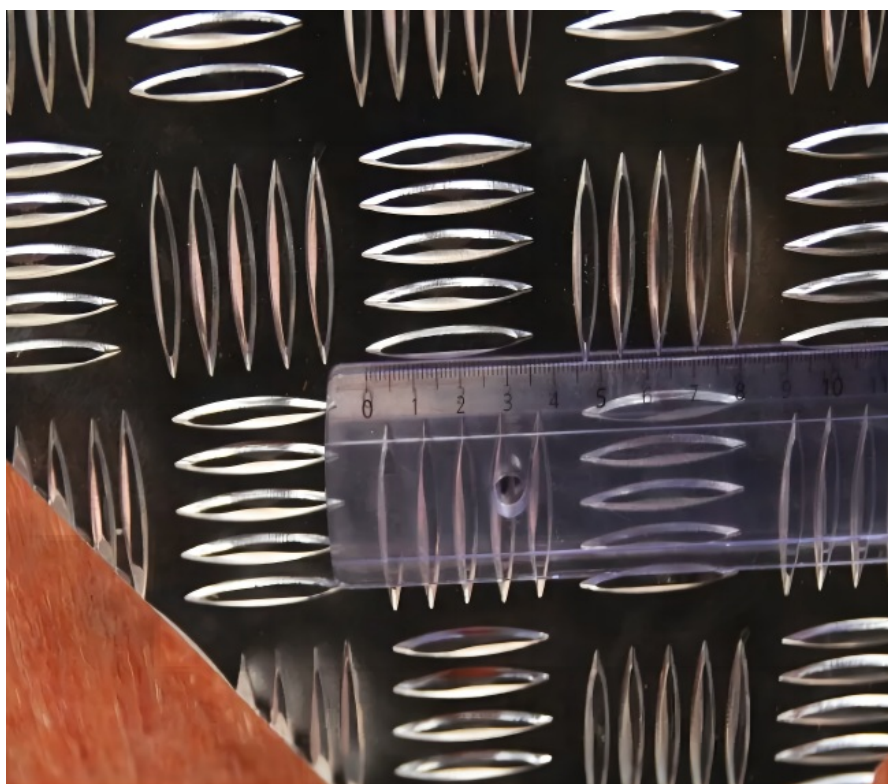
## Product Description

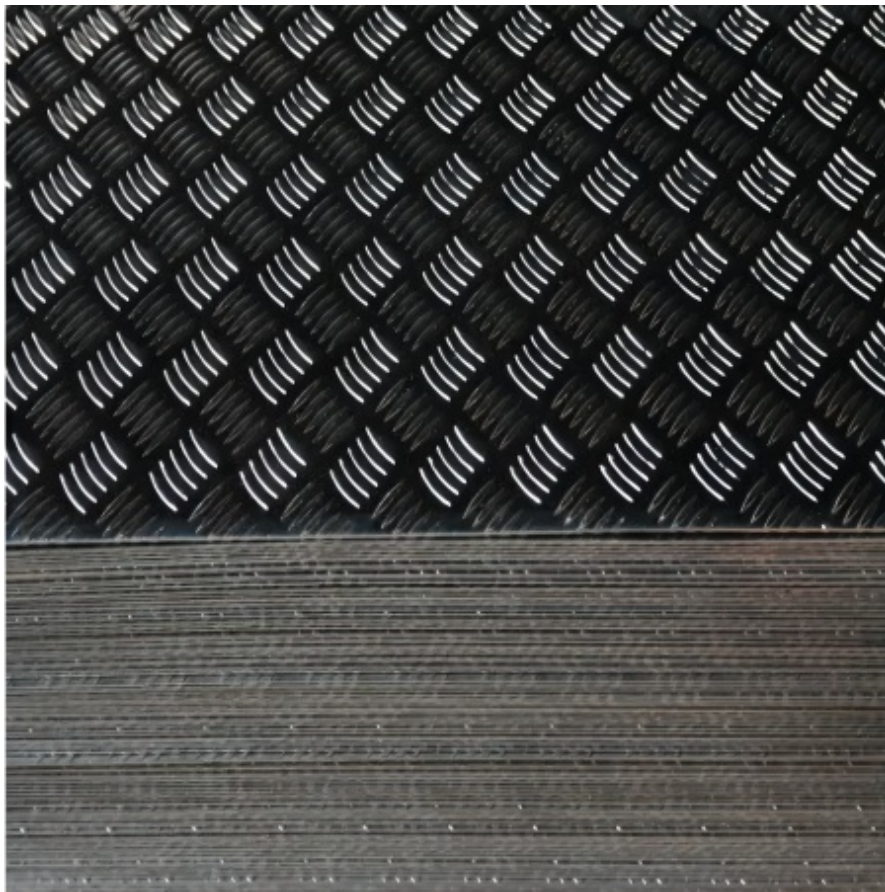
### ASTM 1100 Embossed Surface Aluminium Checkered Plate Used For Cookware 1250mm

1100 aluminum plate for industrial pure aluminum, its low density, good plasticity, usually used for good formability, high corrosion resistance, do not need high strength parts.

Aluminum Sheet / Aluminum Plate	
Brand Name	LIANZHONG
1000 Series	Industrial Pure Aluminum 1050 1060 1070 1100
Surface	Mirror, Brushed and Embossed sandblasted.etc
Thickness(mm)	0.2mm--150mm
Width	1000mm--1500mm
OEM service	Perforated, Cutting special size, Doing flatness, Surface treatment, etc
Package	Export standard package: bundled wooden box, suit for all kinds of transport, or be required

### Product Details

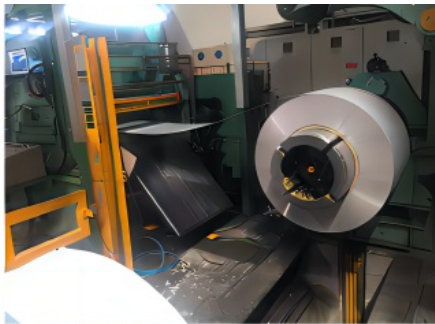








## Warehouse



## Application





### Packing and Shippment



## Certification



**JIANGSU LIANZHONG METAL PRODUCTS (GROUP) CO., LTD**



+8618151700330



sales02@jslzsteel.com



aluminium-sheetcoil.com

Guang Yi Columbus B Tower, Wuxi, Jiangsu, China